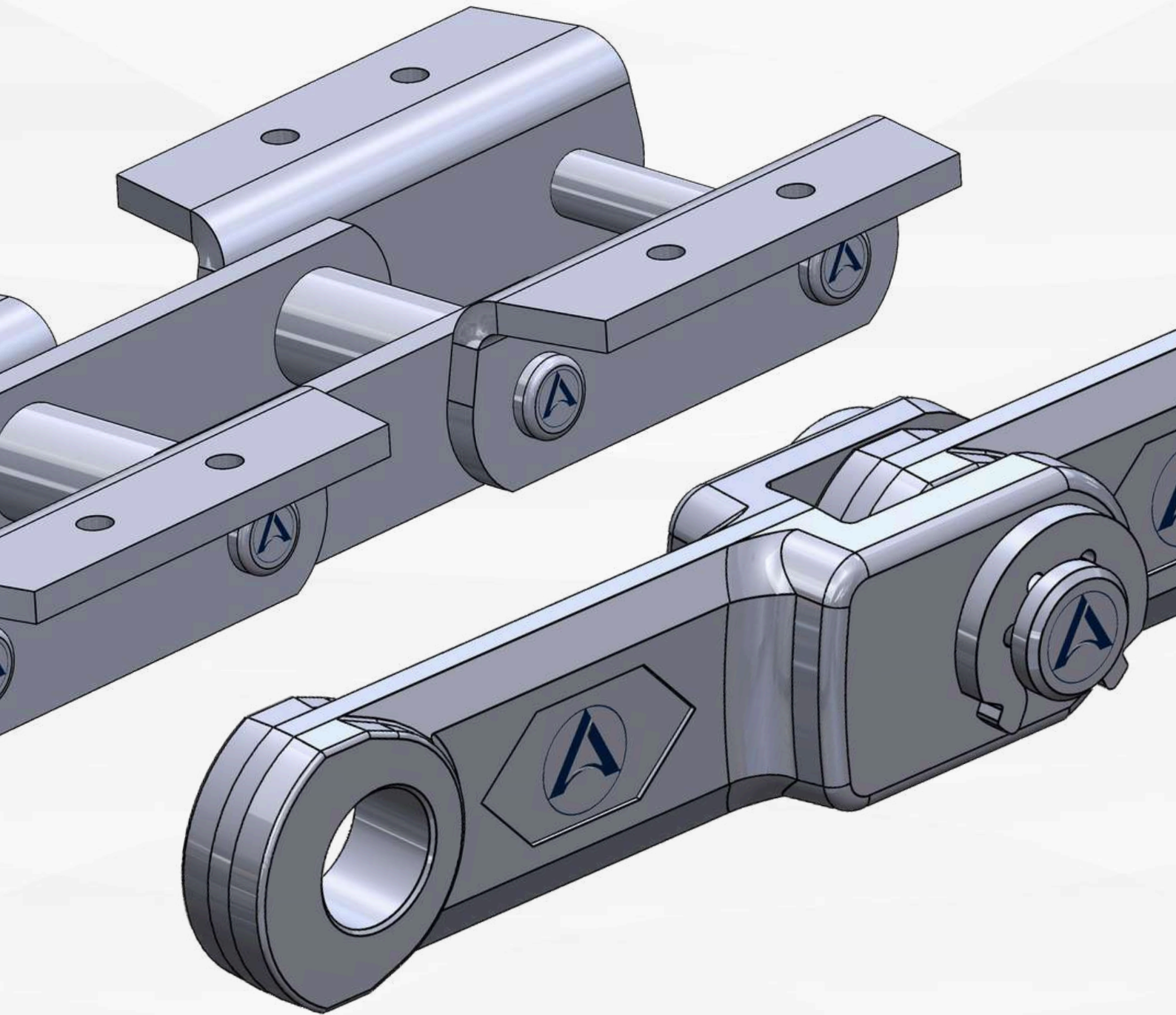


# CONVEYOR CHAINS

AS PER AMERICAN SOCIETY OF MECHANICAL ENGINEERS STANDARDS



**CONTACT US**



## HIGH-STRENGTH WELDED STEEL CHAIN

**AGAMUS AI & AUTOMATION**, offering top-notch welded steel chains as per **ASME 29.200 Standard** for various industries. Our chains feature a welded construction, where barrels are seamlessly welded to the inside of the sidebars, ensuring a robust and economical solution for your needs.

### Key Features:

**Precision Welds:** Our welded steel chains boast reinforced precision welds, offering durability and high strength.

**Quality Alloys:** Utilizing high-quality alloys, our chains are built to withstand the rigors of forestry, agriculture, municipalities, grain handling, cement industry, and a variety of medium to heavy-duty conveyors globally.

**Diverse Applications:** Commonly found in forestry, agriculture, and more, our welded steel chains are versatile and cater to a wide range of applications.

**Corrosion Resistance:** We offer stainless steel welded steel chains suitable for abrasive and corrosive applications.

### OFFSET-SIDEBAR WELDED STEEL CHAIN:

The offset-sidebar style, ranging from WH78 to WH200, is a common and reliable choice. Each chain is designated with specific part numbers, ensuring you get the right style and manufacturing technique for your application.

#### Nomenclature

##### WR: Standard

**WH:** Standard with all components heat-treated.

**WRHD:** Heavy-duty welded steel chain

**WHHD:** Heavy-duty welded steel chain with all components heat-treated.

**WRXHD:** Extra heavy-duty welded steel chain

**WHXHD:** Extra heavy-duty welded steel chain with all components heat-treated.

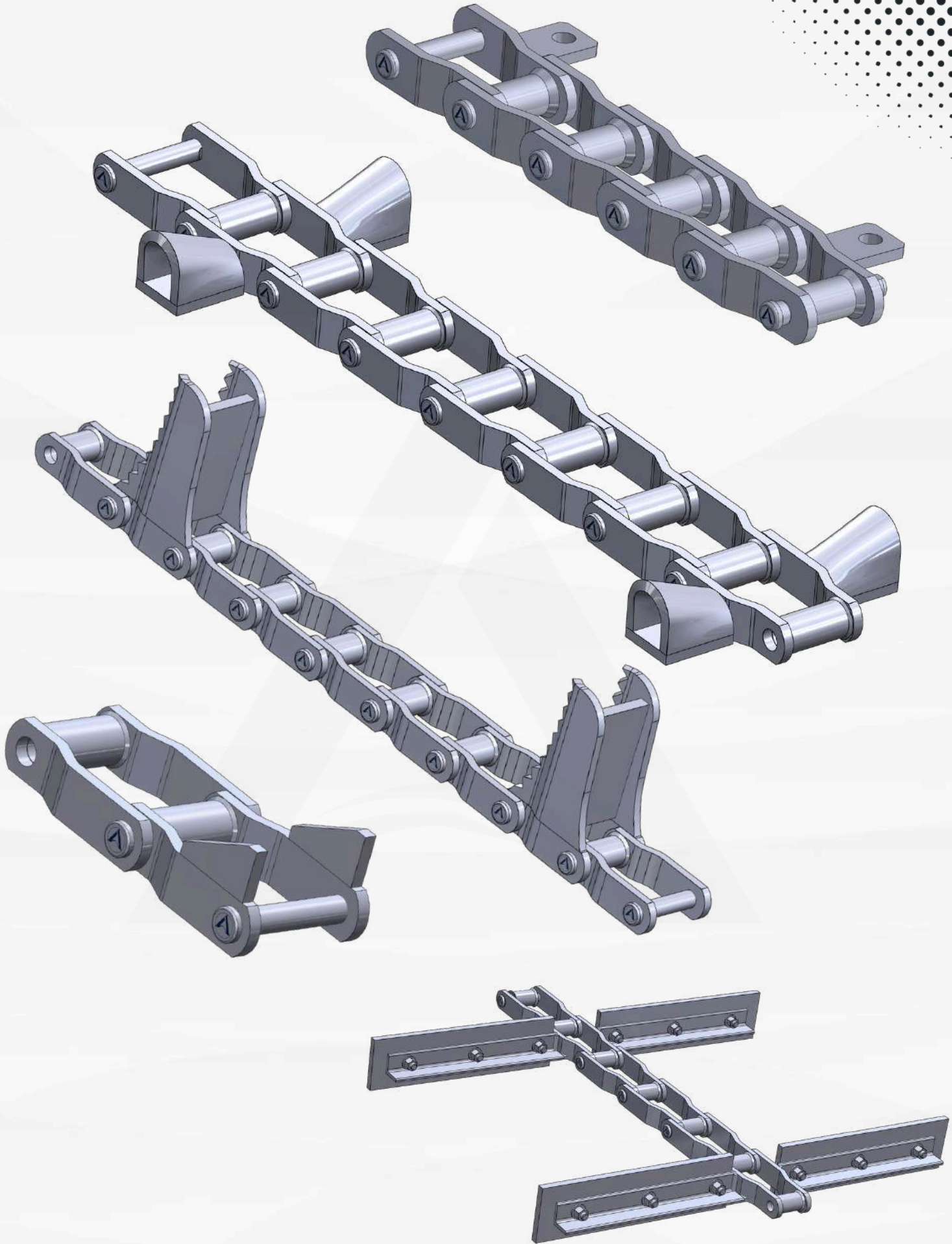
### Comprehensive Solutions:

**Beyond welded steel chains**, Agamus AI & Automation Ltd. provides a complete solution with sprockets, wear component, and more.

For inquiries, email our customer service team at [sales@agamus.ca](mailto:sales@agamus.ca), and we'll be delighted to assist you

### CONTACT US

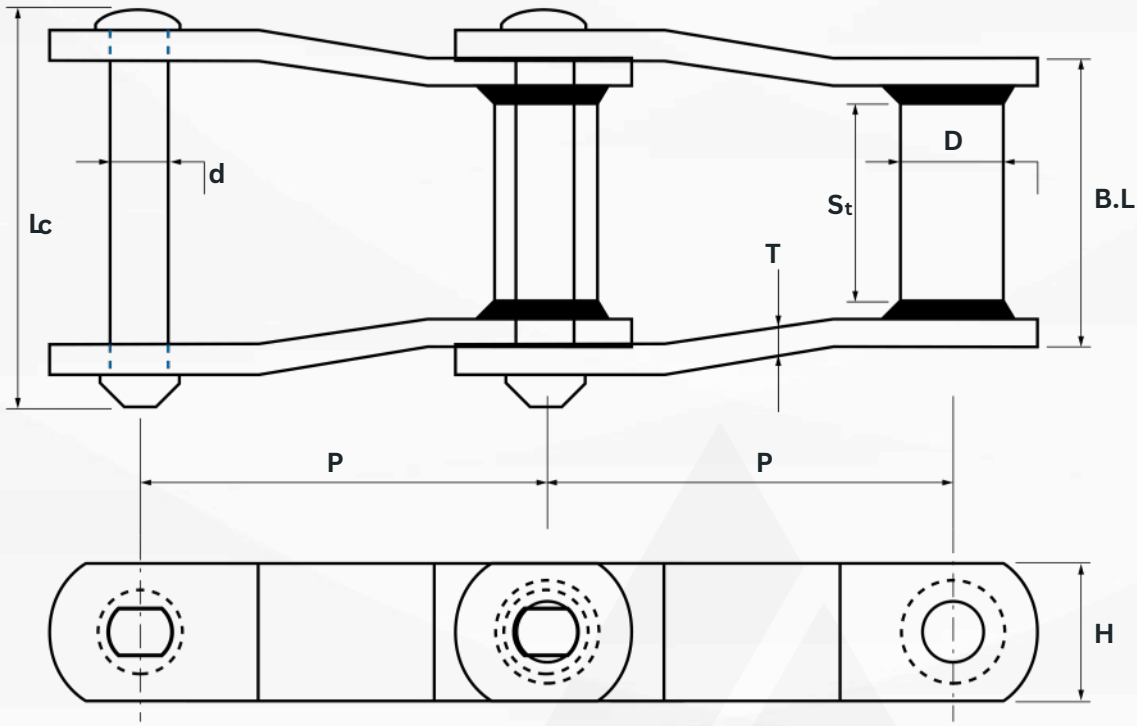




CONTACT US



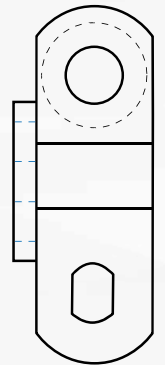
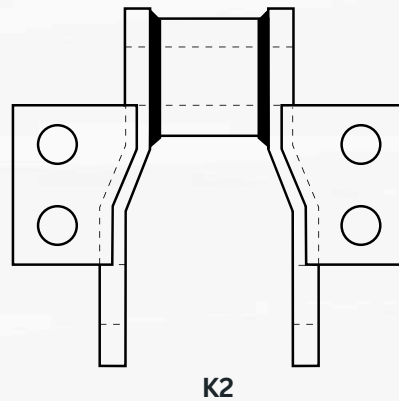
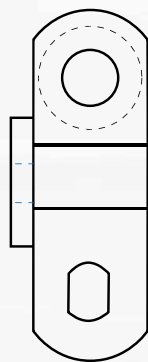
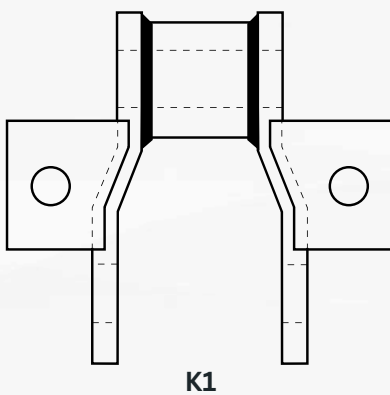
**DIMENSIONS AS PER ASME STANDARD**



CHAIN NO	PITCH
WR78	2.609"
WH78	2.609"
WH78HHD	2.636"
WH78XHHD	2.640"
WR82	3.075"
WH82	3.075"
WH82XHHD	3.075"
WR124	4.000"
WH124	4.000"
WH124XHHD	4.050"
WR106	6.000"
WH106	6.000"
WH106HHD	6.000"
WR110	6.000"
WH110	6.000"
WH106XHHD	6.050"
WR132	6.050"
WH132	6.050"
WH132HHD	6.050"
WH132XHHD	6.050"
WR150	6.050"
WH150	6.050"
WH150HHD	6.050"
WH150XHHD	6.050"

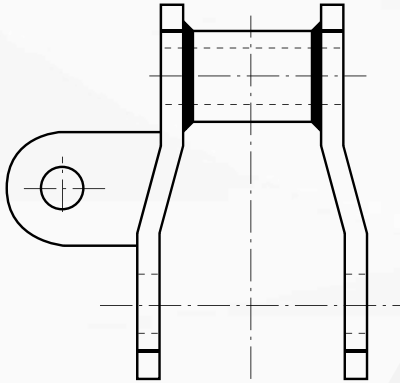
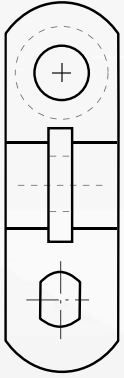
P	PITCH
D	BUSH DIAMETER
d	PIN DIAMETER
T	SIDE BAR THICKNESS
L c	PIN LENGTH
St	MAX SPROCKE THICKNESS
H	SIDE BAR HEIGHT
B.L	BEARING LENGTH

**DIFFERENT WELDED STEEL CHAIN ATATCHMENTS**

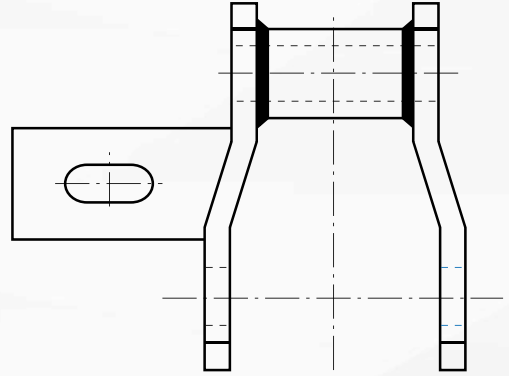
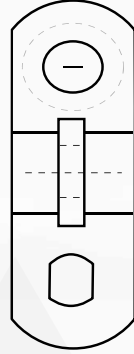


**CONTACT US**

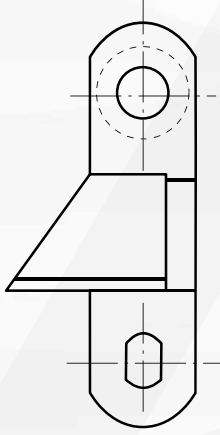
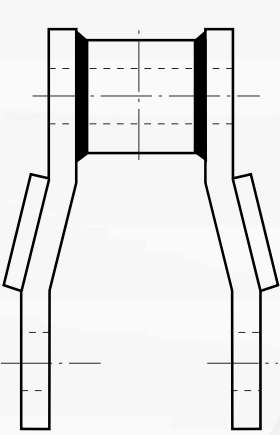




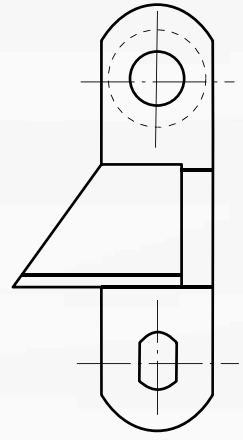
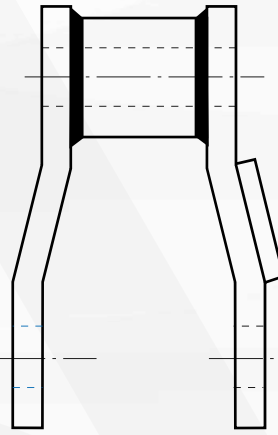
**A22**



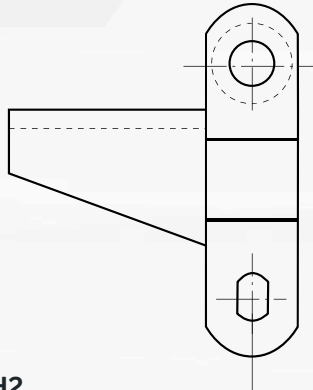
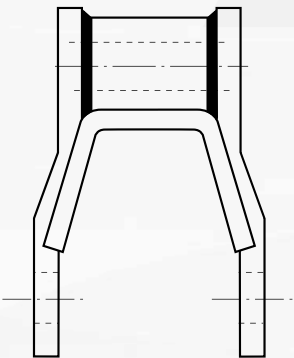
**A22 (SLOTTED)**



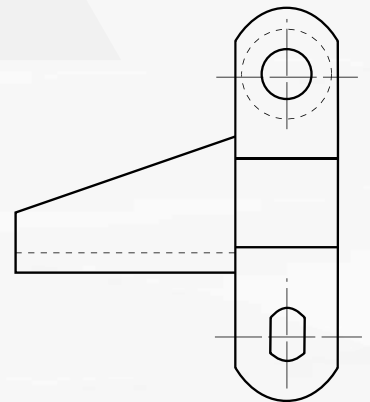
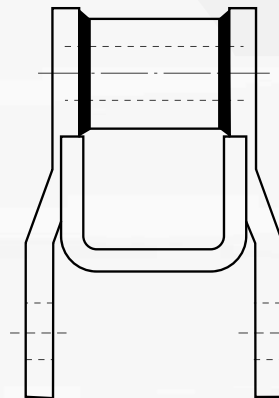
**RR2**



**R2**



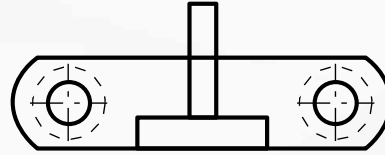
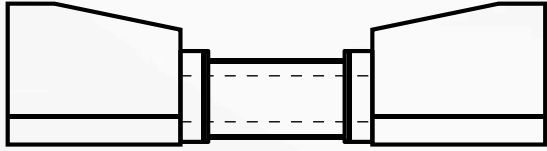
**H2**



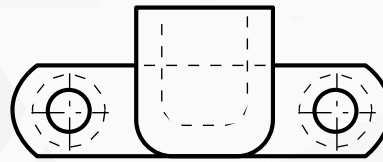
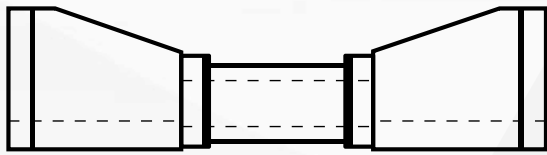
**H1**

**CONTACT US**

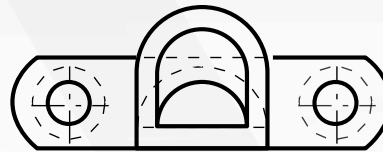
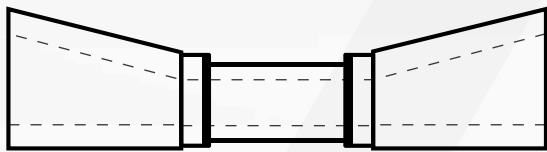




**Style A**

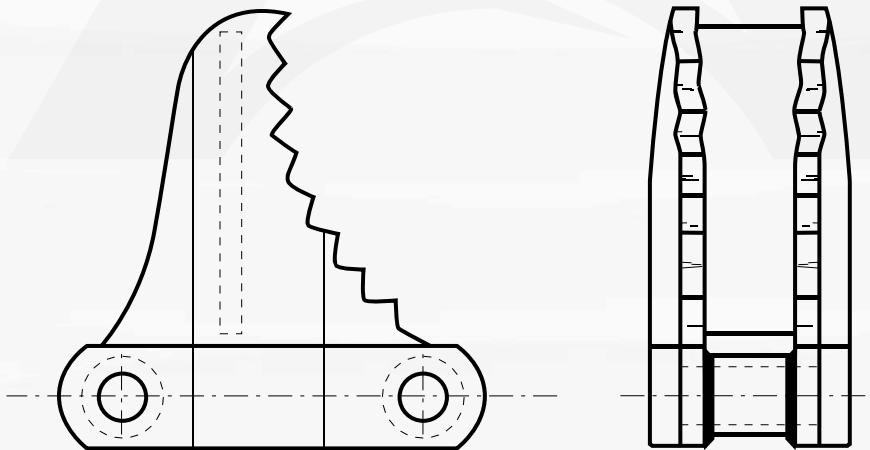


**Style B**



**Style C**

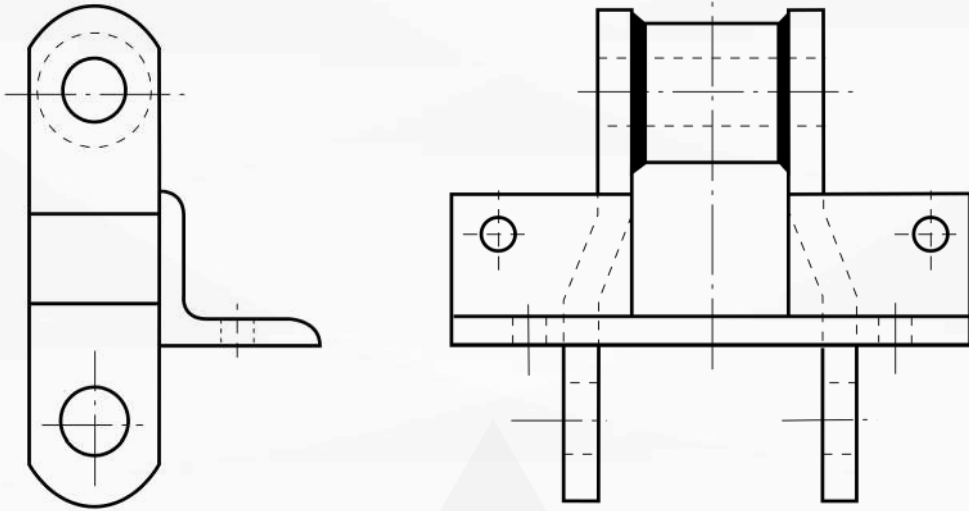
**CRADLE ATTACHMENT**



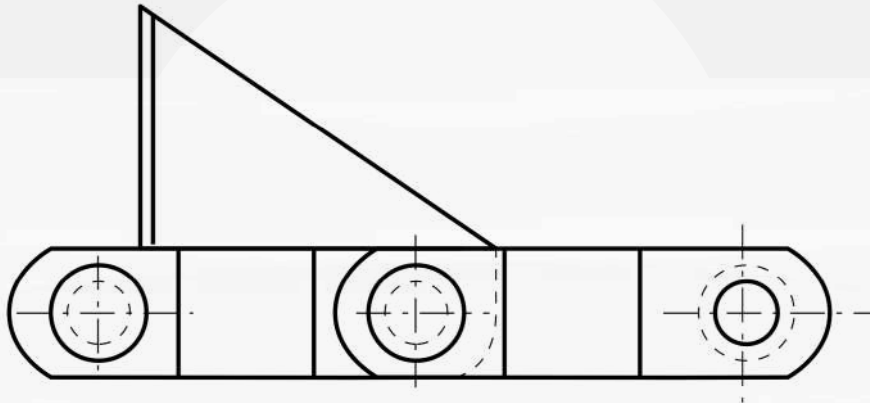
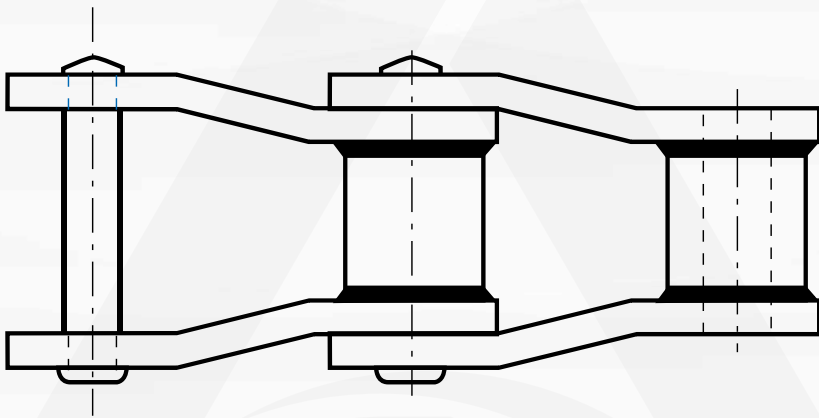
**SLASHER ATTACHMENT**

**CONTACT US**





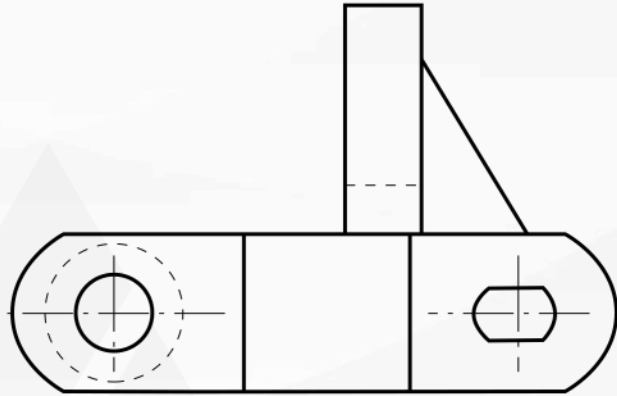
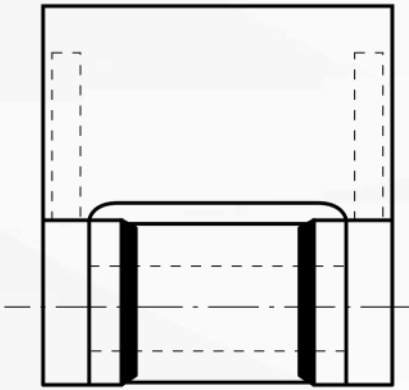
F4



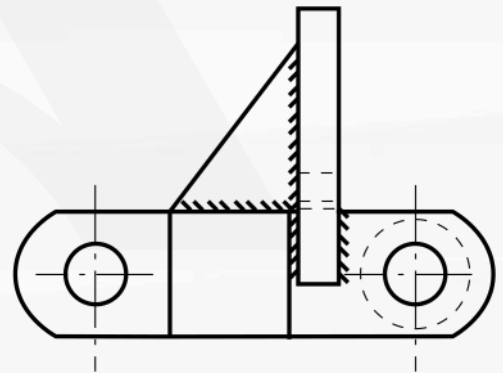
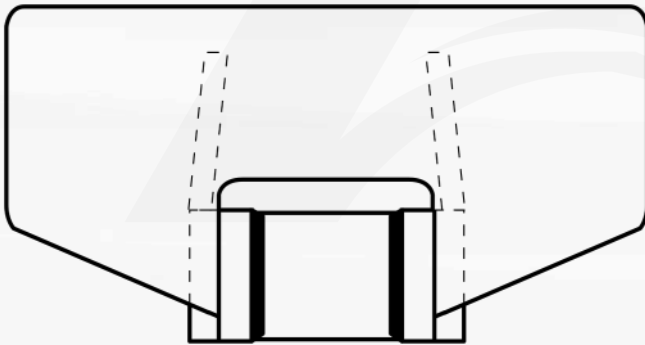
S1

CONTACT US





RF2



RF12

CONTACT US





## WELDED STEEL CHAIN (C-TYPE OR STRAIGHT BARS)

**Agamus AI & Automation Ltd**, offer top-quality straight sidebar welded steel chains designed to meet the demands of robust industrial applications. Our meticulously crafted chains deliver unmatched strength and durability, ideal for various settings, including conveyors, hoists, and other industrial equipment.

### Key Features:

- **Construction:** Stable platform with welded steel links and straight sidebars for heavy loads.
- **Versatility:** Available in various sizes and pitches for diverse applications.
- **Material Options:** Crafted from durable carbon steel, with corrosion-resistant choices.

**Agamus AI & Automation Ltd**, as your trusted supplier, provides straight sidebar welded steel chains for:

- **Material Handling:** Ideal for conveyors, elevators, and apron feeders.
- **Power Transmission:** Vital for driven systems, gearboxes, and assembly lines.
- **Agricultural Equipment:** Essential in harvesters, spreaders, and irrigation systems.
- **Forestry and Logging:** Trusted in Debarkers, skidders, and sawmills.
- **Waste Management:** Key for sorting conveyors, shredders, and compactors.

### Nomenclature

**WRC** = Standard C-type Chain

**WHC** = Standard C-type Chain with all components heat-treated

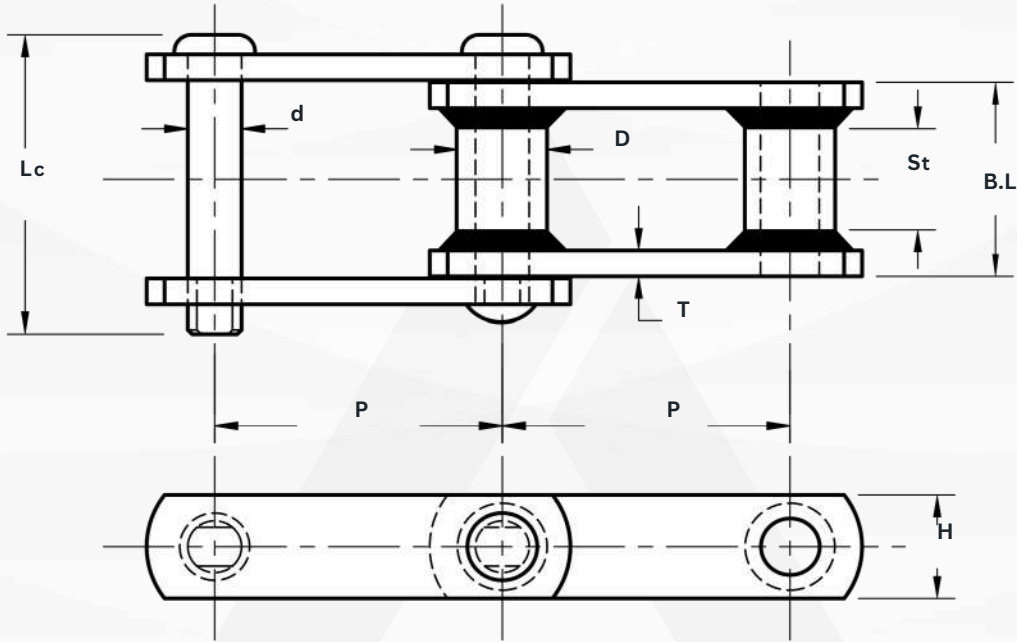
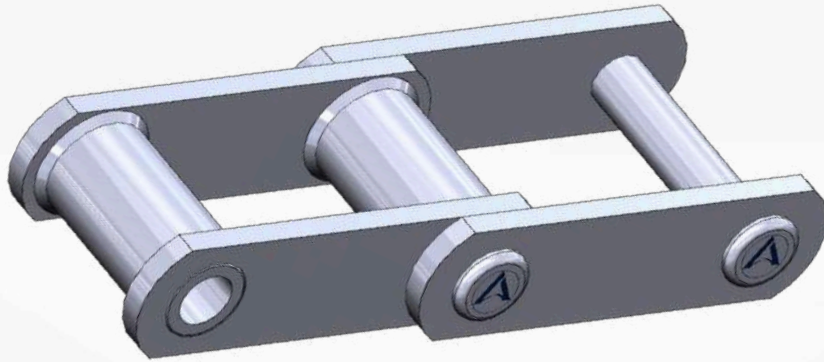
**WHC---XHD** = Extra heavy-duty C-type Chain, welded steel, with all components heat-treated

**C-type or Straight sidebar** welded steel chains are ideal for heavy-duty conveyor applications. They are compatible with the same sprockets as offset welded steel chains and can operate in both directions. Additionally, these chains are available with attachments similar to those on offset welded chains, and we offer customized attachment options to meet your specific needs.

For more information or to discuss your requirements, please contact us at [sales@agamus.ca](mailto:sales@agamus.ca). Below, you'll find the C-type chain size chart and part number nomenclature.

CONTACT US





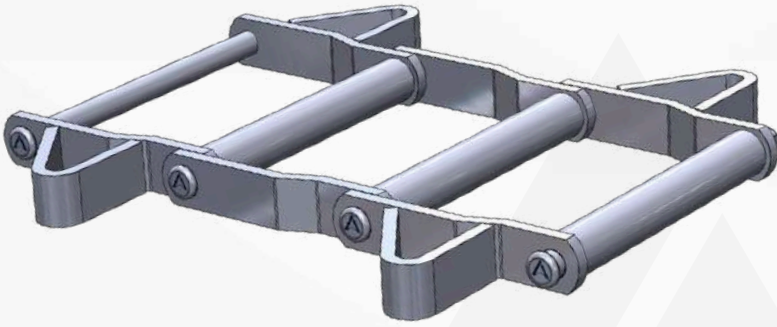
<b>P</b>	<b>PITCH</b>
<b>D</b>	BUSH DIAMETER
<b>d</b>	PIN DIAMETER
<b>T</b>	SIDE BAR THICKNESS
<b>L c</b>	PIN LENGTH
<b>St</b>	MAX SPROCKE THICKNESS
<b>H</b>	SIDE BAR HEIGHT
<b>B.L</b>	BEARING LENGTH

CHAIN NO	P	H	T	d	Lc	B.L	St	D
WRC110	6.000"	1-1/2"	3/8"	3/4"	4-1/4"	2-13/16"	1-1/2"	1-1/4"
WHC110	6.000"	1-1/2"	3/8"	3/4"	4-1/4"	2-13/16"	1-1/2"	1-1/4"
WHC110XHD	6.050"	2.00"	1/2"	1.00"	4-7/8"	3.00"	1-1/2"	1.660"
WRC111	4.760"	1-3/4"	3/8"	3/4"	4-13/16"	3-3/8"	2.00"	1-1/4"
WHC111	4.760"	1-3/4"	3/8"	3/4"	4-13/16"	3-3/8"	2.00"	1-1/4"
WRC124	4.000"	1-1/2"	3/8"	3/4"	4-1/4"	2-13/16"	1-1/2"	1-1/4"
WHC124	4.000"	1-1/2"	3/8"	3/4"	4-1/4"	2-13/16"	1-1/2"	1-1/4"
WHC124XHD	4.050"	2.00"	1/2"	1.00"	4-7/8"	3.00"	1-1/2"	1.660"
WRC131	3.075"	1-1/2"	3/8"	3/4"	3-9/16"	2-1/8"	1-1/8"	1-1/4"
WHC131	3.075"	1-1/2"	3/8"	3/4"	3-9/16"	2-1/8"	1-1/8"	1-1/4"
WRC132	6.050"	2.00"	1/2"	1.00"	6-1/4"	4-7/16"	3-1/8"	1.660"
WHC132	6.050"	2.00"	1/2"	1.00"	6-1/4"	4-7/16"	3-1/8"	1.660"
WHC132XHD	6.050"	2.00"	5/8"	1.00"	6-3/4"	4-11/16"	3-1/8"	1.660"
WRC150	6.050"	2-1/2"	1/2"	1.00"	6-1/4"	4-7/16"	3-1/8"	1.660"
WHC150	6.050"	2-1/2"	1/2"	1.00"	6-1/4"	4-7/16"	3-1/8"	1.660"
WHC150XHD	6.050"	2-1/2"	5/8"	1.00"	6-3/4"	4.687"	3-1/8"	1.660"

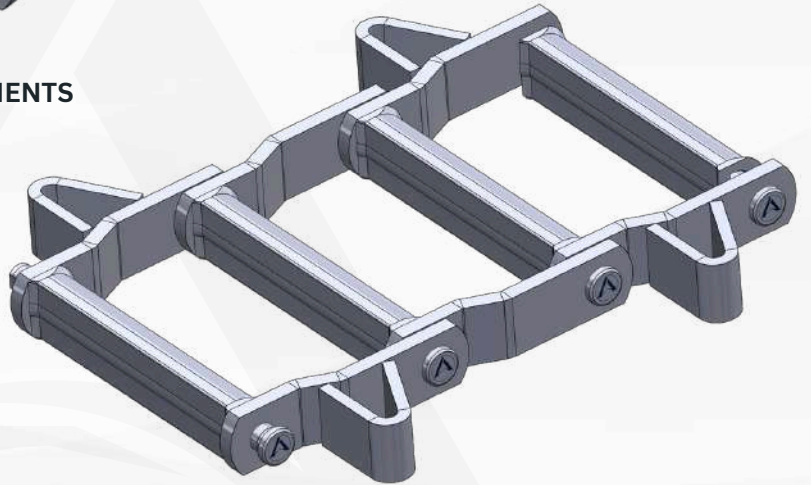
CONTACT US



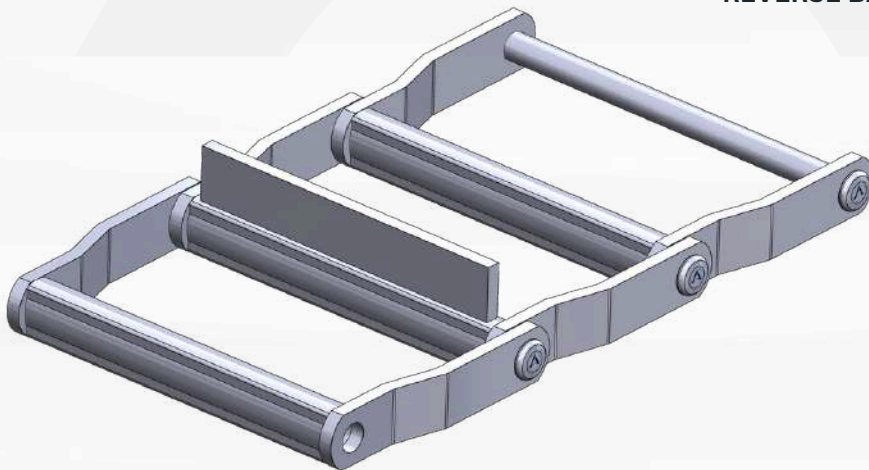
## WELDED STEEL DRAG CHAIN



**STANDARD BARREL WING ATTACHMENTS**



**REVERSE BARREL & WING ATTACHMENTS**



**C- TYPE ATTACHMENT**

## DRAG CHAIN WITH ATTACHMENTS

CONTACT US



## WELDED STEEL DRAG CHAIN

**AGAMUS AI & AUTOMATION** supplies a high-quality range of welded steel drag chains (**standard and Reverse Barrel**), featuring large carrying surfaces suitable for demanding applications such as grain handling, mining, forestry, and milling. Our chains adhere to both American and ISO standards, ensuring compatibility and seamless interchangeability with other brands and systems.

### Key Features:

**Durable Construction:** Built for heavy-duty use, our drag chains offer reliable performance in challenging environments.

**Versatile Applications:** Suitable for a variety of applications, including grain handling, mining, forestry, and milling.

**Standard Compliance:** All chains conform to American and industry standards for easy integration with existing systems.

### Nomenclature:

**WD:** Standard Drag Chain

**WDH:** Standard Drag Chain with Fully Heat-Treated Components

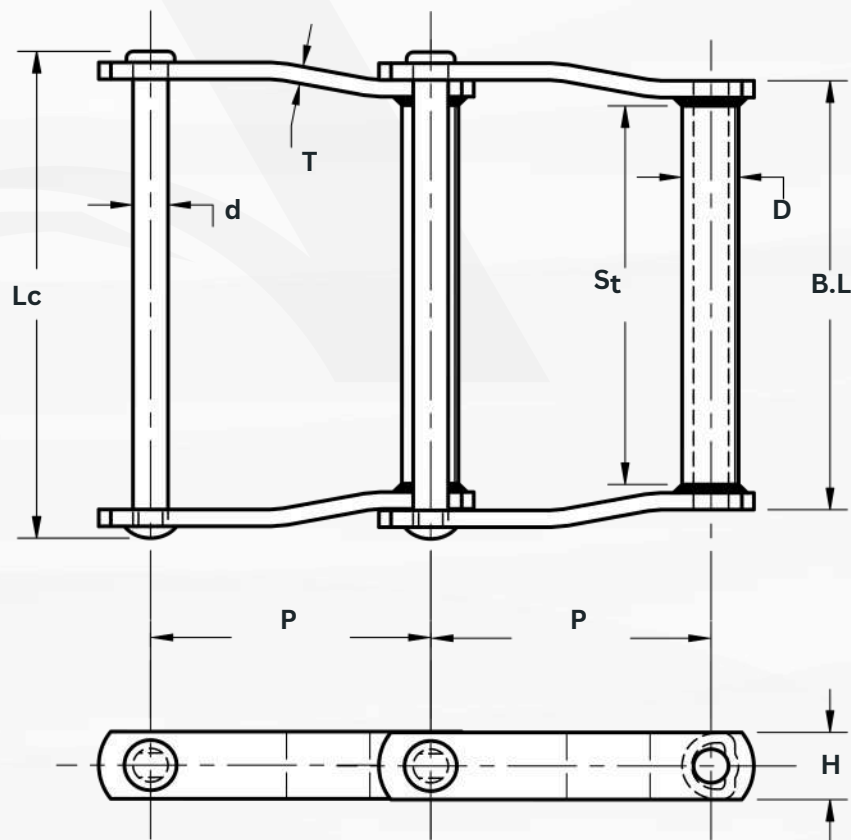
**WDH---XHD:** Extra Heavy-Duty Drag Chain with Fully Heat-Treated Components

### Comprehensive Solutions:

In addition to drag chains, **Agamus AI & Automation Ltd.** provides a full range of solutions, including sprockets, wear components, and more.

For more information or to discuss your specific needs, please contact our customer service team at [sales@agamus.ca](mailto:sales@agamus.ca). We look forward to assisting you.

<b>P</b>	<b>PITCH</b>
<b>D</b>	BUSH DIAMETER
<b>d</b>	PIN DIAMETER
<b>T</b>	SIDE BAR THICKNESS
<b>L c</b>	PIN LENGTH
<b>St</b>	MAX SPROCKE THICKNESS
<b>H</b>	SIDE BAR HEIGHT
<b>B.L</b>	BEARING LENGTH

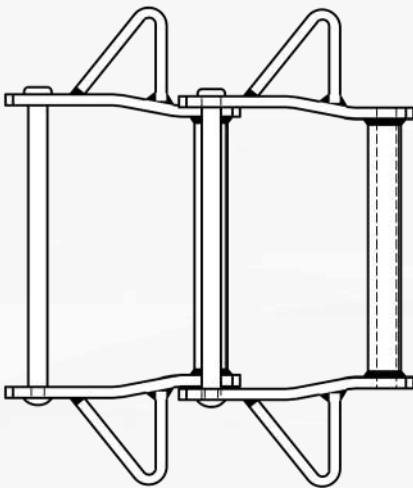


### CONTACT US

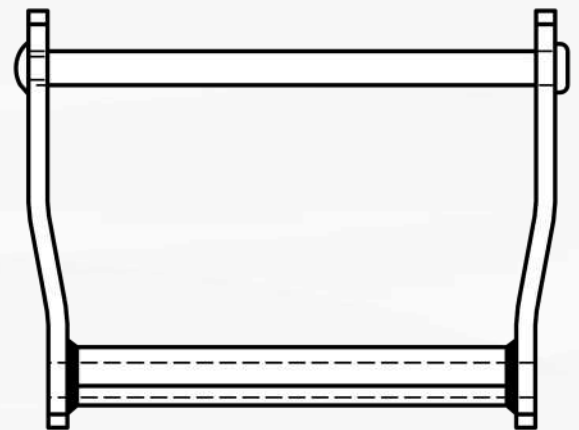
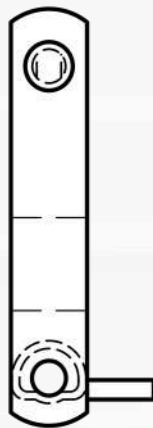


CHAIN NO	P	H	T	d	Lc	B.L	St
WD102	5.00"	1-1/2"	3/8"	3/4"	9-1/4"	7-3/4"	6-3/8"
WDH102	5.00"	1-1/2"	3/8"	3/4"	9-1/4"	7-3/4"	6-3/8"
WD104	6.00"	1-1/2"	3/8"	3/4"	6-3/4"	5-3/8"	4-1/8"
WDH104	6.00"	1-1/2"	3/8"	3/4"	6-3/4"	5-3/8"	4-1/8"
WD110	6.00"	1-1/2"	3/8"	3/8"	11-3/4"	10-1/4"	9.00"
WDH110	6.00"	1-1/2"	3/8"	3/8"	11-3/4"	10-1/4"	9.00"
WD112	8.00"	1-1/2"	3/8"	3/4"	11-3/4"	10-1/4"	9.00"
WDH112	8.00"	1-1/2"	3/8"	3/4"	11-3/4"	10-1/4"	9.00"
WD116	8.00"	1-3/4"	3/8"	3/4"	15-1/2"	14-1/8"	13.00"
WDH116	8.00"	1-3/4"	3/8"	3/4"	15-1/2"	14-1/8"	13.00"
WD118	8.00"	2.00"	1/2"	7/8"	16-5/8"	14-7/8"	13-1/4"
WDH118	8.00"	2.00"	1/2"	7/8"	16-5/8"	14-7/8"	13-1/4"
WDH118XHD	8.00"	2.00"	5/8"	1.00"	17-3/8"	15-1/8"	13-1/4"
WD120	6.00"	2.00"	1/2"	7/8"	12.0"	10-1/4"	8-3/4"
WDH120	6.00"	2.00"	1/2"	7/8"	12.0"	10-1/4"	8-3/4"
WDH120XHD	6.00"	2.00"	5/8"	1.00"	12-3/4"	10-1/2"	8-3/4"
WD122	8.00"	2.00"	1/2"	7/8"	12.0"	10-1/4"	8-3/4"
WDH122	8.00"	2.00"	1/2"	7/8"	12.0"	10-1/4"	8-3/4"
WDH122XHD	8.00"	2.00"	5/8"	1.00"	12-3/4"	10-1/2"	8-3/4"
WD480	8.00"	2.00"	1/2"	7/8"	14-1/2"	12-3/4"	11.00"
WDH480	8.00"	2.00"	1/2"	7/8"	14-1/2"	12-3/4"	11.00"
WDH480XHD	8.00"	2.00"	5/8"	1.00"	15-1/4"	13.00"	11.00"
WD580	8.00"	2.00"	1/2"	1.00"	14.63"	12.10"	11.20"
WDH580	8.00"	2.00"	1/2"	1.00"	14.63"	12.10"	11.20"
WD680	8.00"	2.00"	10/16"	1.00"	15.33"	13.00"	11.20"
WDH680	8.00"	2.00"	10/16"	1.00"	15.33"	13.00"	11.20"

**DRAG CHAIN ATTACHMENTS**



**WING ATTACHMENTS**

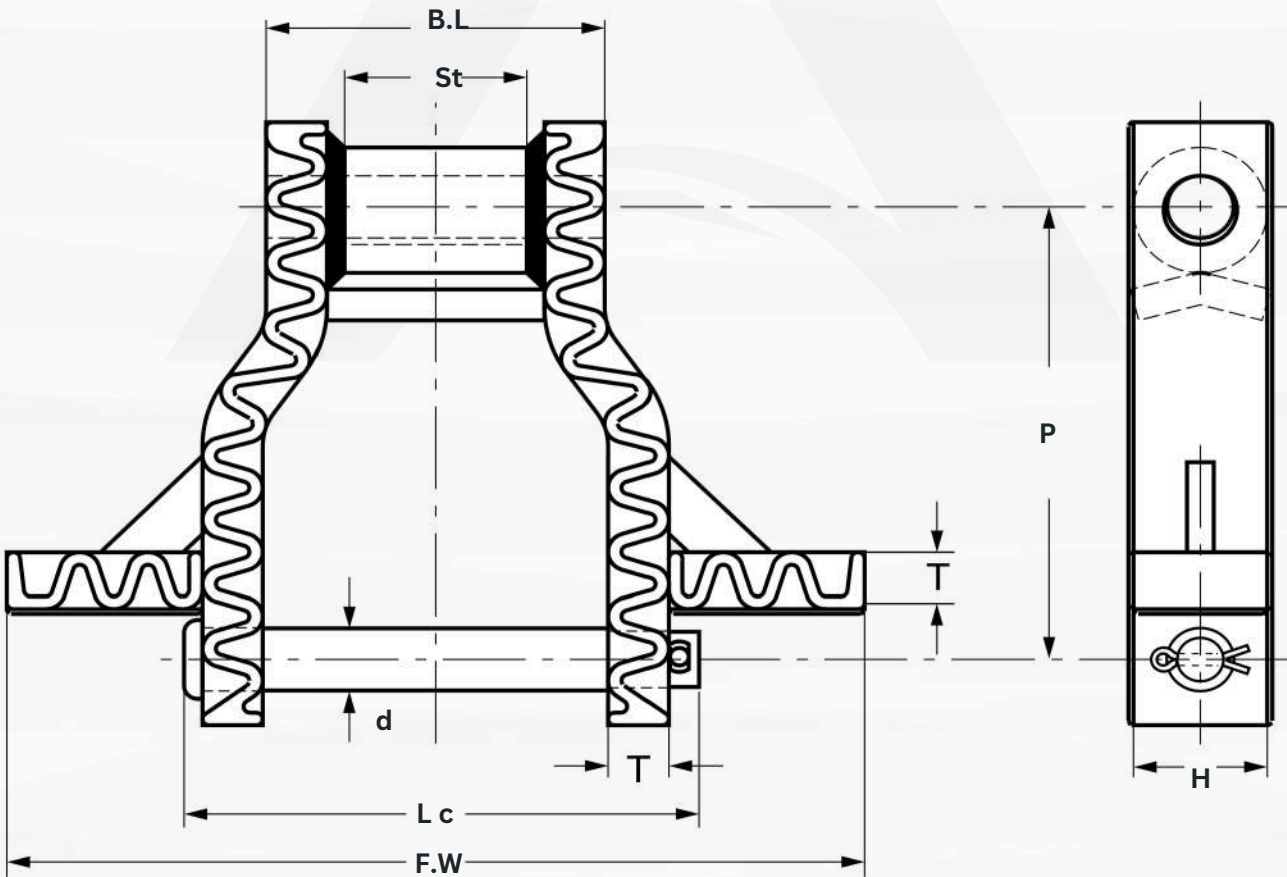
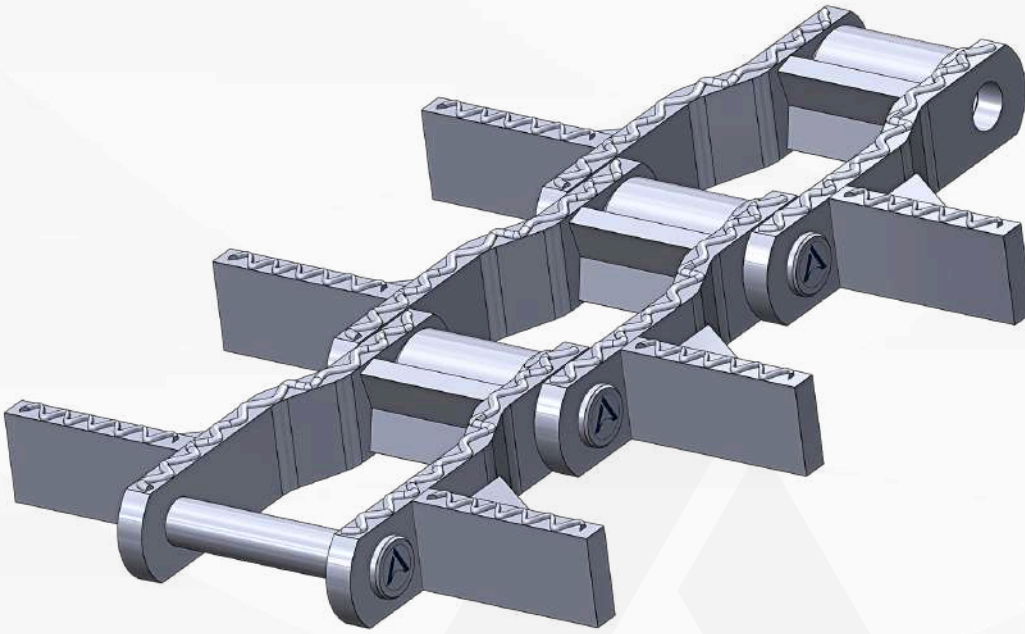


**C- TYPE ATTACHMENT**

**CONTACT US**



**WELDED STEEL HEAVY DUTY CHAIN (WHX)**



CONTACT US



## WELDED STEEL HEAVY DUTY CHAIN (WHX)

**Agamus AI & Automation Ltd.** Supplies a premium range of high-strength welded steel drag chains, including the robust WHX chain. The WHX chain excels in demanding environments, featuring hardened surfaces, square edges, and induction-hardened pins to handle the most abrasive applications. These enhancements provide superior wear life and abrasion resistance.

Our chains deliver exceptional performance and durability for various applications such as grain handling, mining, forestry, and milling. We also offer face-hardening options on one or both sides to extend wear life and ensure long-lasting reliability.

### Key Features:

**High Strength:** Our drag chains provide reliable performance in tough conditions.

**Enhanced Durability:** The WHX chain includes hardened surfaces, square edges, and induction-hardened pins for extended wear life and high abrasion resistance.

**Versatile Applications:** Suitable for a variety of applications, including grain handling, mining, forestry, and milling.

**Standard Compliance:** All chains meet American and ISO standards for seamless integration with existing systems.

### Nomenclature:

**WHX:** Heavy-Duty Welded Drag Chain.

**Comprehensive Solutions:** In addition to drag chains, **Agamus AI & Automation Ltd.** offers a full line of high-quality WHX sprockets and other solutions, including wear components.

For more information or to discuss your specific requirements, please contact our customer service team at [sales@agamus.ca](mailto:sales@agamus.ca). We look forward to assisting you.

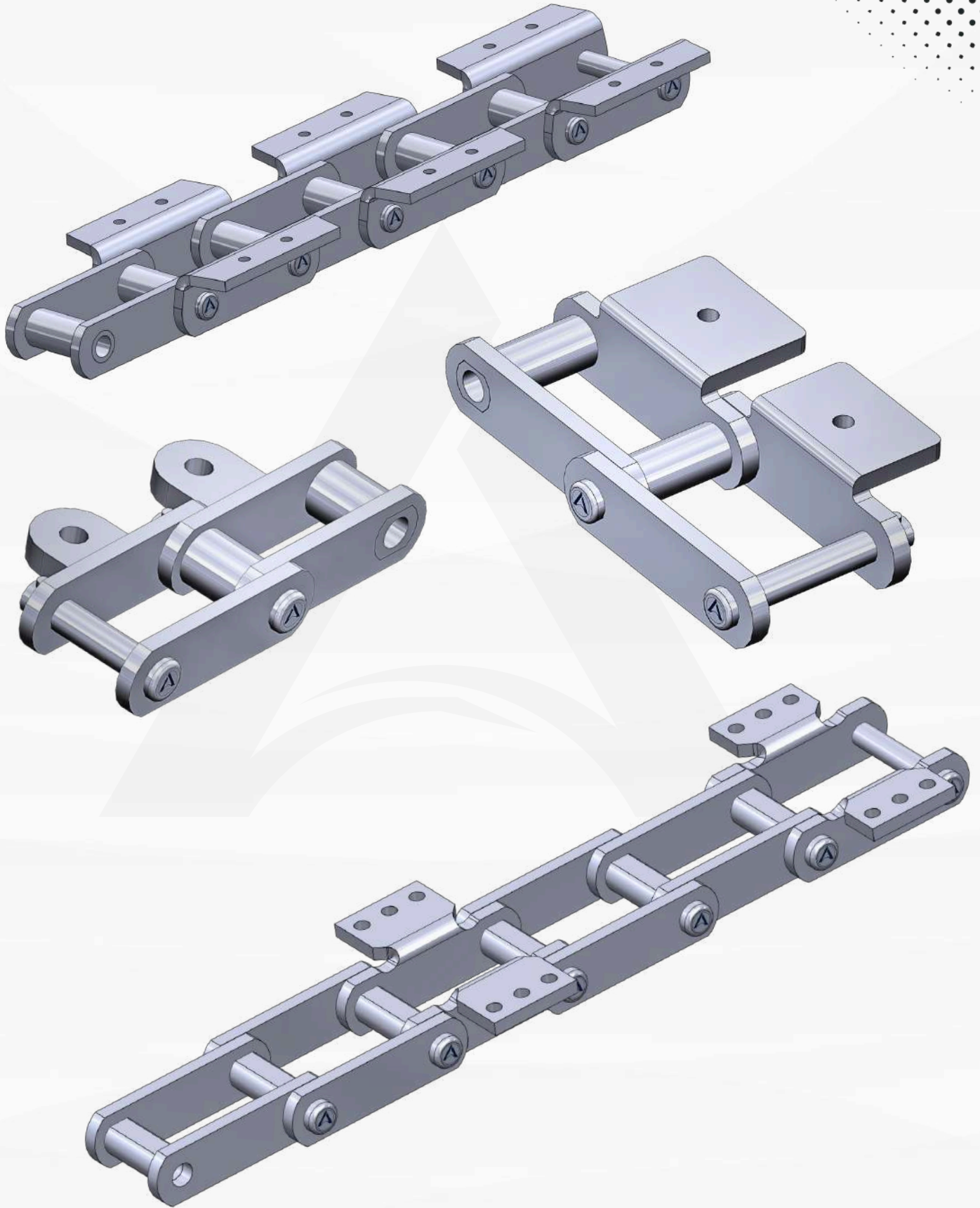
<b>P</b>	<b>PITCH</b>
<b>D</b>	BUSH DIAMETER
<b>d</b>	PIN DIAMETER
<b>T</b>	SIDE BAR THICKNESS
<b>Lc</b>	PIN LENGTH
<b>St</b>	MAX SPROCKE THICKNESS
<b>H</b>	SIDE BAR HEIGHT
<b>B.L</b>	BEARING LENGTH
<b>F.W</b>	FACE WIDTH (8" -21")

<b>CHAIN NO</b>	<b>P</b>	<b>Lc</b>	<b>St</b>	<b>d</b>	<b>D</b>	<b>H</b>	<b>T</b>
WHX5157	6.05"	6.875"	3.000"	1.125"	1.75"	2.50"	0.625"
WHX6067	9.00"	8.190"	3.625"	1.250"	2.50"	2.50"	0.750"
WHX6267	9.00"	8.062"	3.630"	1.375"	2.50"	2.50"	0.750"
WHX5121	9.00"	9.873"	3.630"	1.125"	2.50"	2.50"	1.125"
WHX5221	9.00"	9.813"	3.630"	1.375"	2.50"	2.50"	1.125"
WHX6121	9.00"	9.750"	3.630"	1.250"	2.50"	2.50"	1.125"
WHX6221	9.00"	9.813"	3.630"	1.375"	2.50"	2.50"	1.125"

### CONTACT US



# STEEL BUSHED WITHOUT ROLLER CHAIN



CONTACT US





## STEEL BUSHED WITHOUT ROLLER CHAIN

**Agamus AI & Automation Ltd.** supplies a premium range of high-strength steel bushed chains as per **ASME** standard ideal for demanding applications such as asphalt, lumber, sugar mills, and elevating systems. Our steel bushed chains are sourced to meet American Standards, offering superior strength and durability compared to other suppliers.

We offer two variations of steel bushed chains: straight bar (**S.B**) and offset style (**O.S**). Each variation is designed to meet specific application needs and ensure optimal performance.

### Key Features:

**High Strength:** Our steel bushed chains deliver reliable performance in challenging environments.

**Enhanced Durability:** Sourced to meet American Standards, ensuring superior strength and longevity.

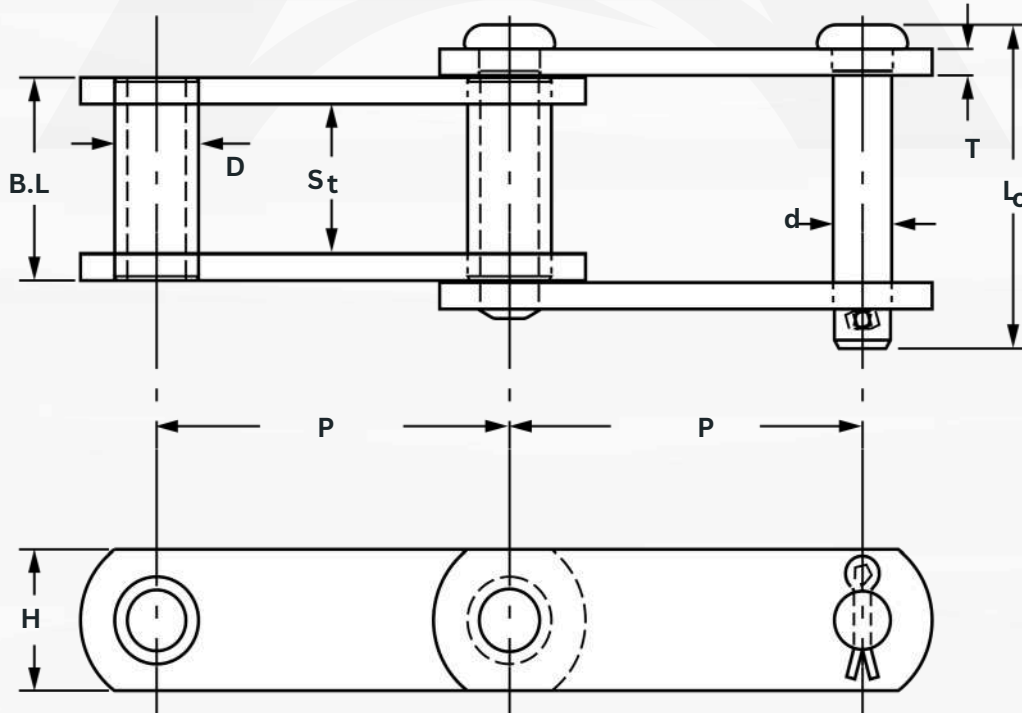
**Versatile Applications:** Suitable for asphalt, lumber, sugar mills, and elevating systems.

**Two Variations:** Available in straight bar and offset styles to suit various application requirements.

**Standard Compliance:** All chains conform to American Standards for seamless integration with existing systems.

**Comprehensive Solutions:** In addition to steel bushed chains, Agamus AI & Automation Ltd. offers a full range of high-quality sprockets and other solutions, including wear components.

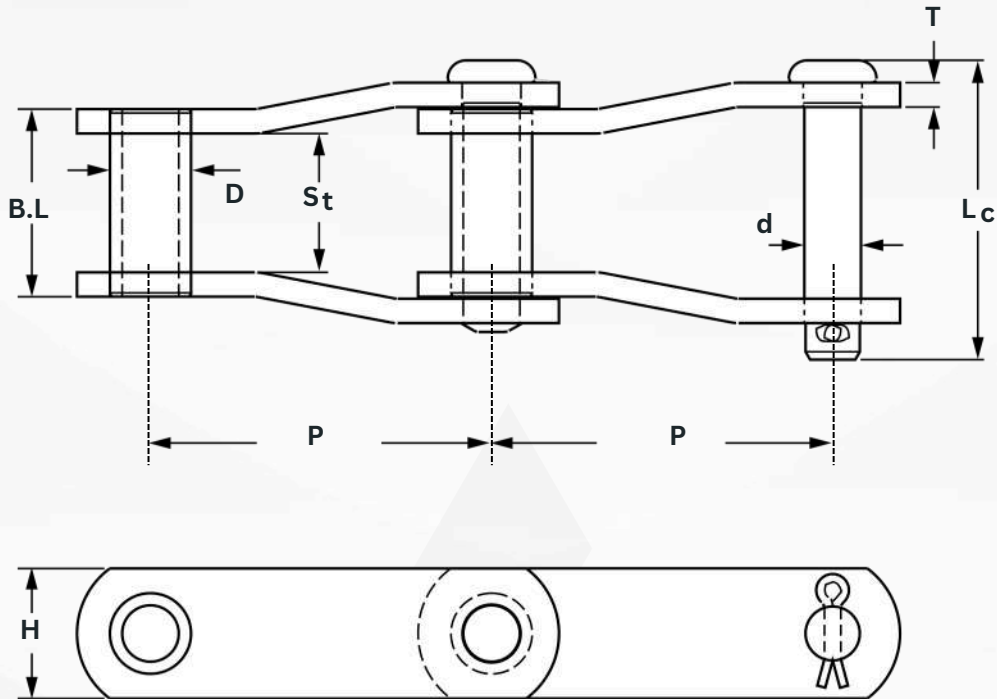
For more information or to discuss your specific requirements, please contact our customer service team at [sales@agamus.ca](mailto:sales@agamus.ca). We look forward to assisting you.



**S.B STYLE**

CONTACT US





**O.S. STYLE**

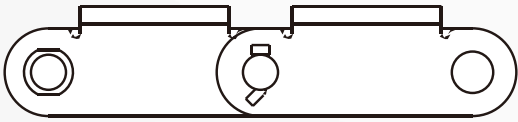
<b>P</b>	<b>PITCH</b>
<b>D</b>	BUSH DIAMETER
<b>d</b>	PIN DIAMETER
<b>T</b>	SIDE BAR THICKNESS
<b>L c</b>	PIN LENGTH
<b>St</b>	MAX SPROCKE THICKNESS
<b>H</b>	SIDE BAR HEIGHT
<b>B.L</b>	BEARING LENGTH

CHAIN NO	STYLE	P	Lc	T	H	B.L	D	St	d
SS188	S.B	2.61"	2.69"	1/4 "	1 1/8 "	1 9/16"	7/8 "	1 1/16"	1/2 "
SS131	S.B	3.08"	3.52"	3/8 "	1 1/2 "	2 1/16"	1 1/4 "	1 5/16"	5/8 "
SS825	O.S	4.00"	3.87"	3/8 "	2"	2 5/16"	1 1/8 "	1 9/16"	3/4 "
SS102B	S.B	4.00"	4.37"	3/8 "	1 1/2 "	2 7/8 "	1"	2 1/8 "	5/8 "
SS102.5	S.B	4.04"	4.56"	3/8 "	1 3/4 "	3"	1 3/8 "	2 1/4 "	3/4 "
111	S.B	4.76"	4.97"	3/8 "	2"	3 3/8 "	1 7/16"	2 5/8 "	3/4 "
110	S.B	6.00"	4.37"	3/8 "	1 1/2 "	2 7/8 "	1 1/4 "	2 1/8 "	5/8 "
833	S.B	6.00"	4.97"	3/8 "	2"	3 3/8 "	1 7/16"	2 5/8 "	3/4 "
844	O.S	6.00"	5.31"	1/2 "	2"	3 1/2 "	1 3/16"	2 1/2 "	3/4 "
856	S.B	6.00"	5.99"	1/2 "	2 1/2 "	4"	1 3/4 "	3"	1"
956	S.B	6.00"	5.99"	1/2 "	3"	4"	1 3/4 "	2 15/16"	1"
857	S.B	6.00"	5.99"	1/2 "	3 1/4 "	4"	1 3/4 "	3"	1"
958	S.B	6.00"	6.07"	9/16"	3 1/4 "	4 1/8 "	2"	3"	1 1/8 "
859	S.B	6.00"	7.62"	5/8 "	4"	5"	2 3/8 "	3 3/4 "	1 1/4 "
6150	S.B	6.05"	6.36"	1/2 "	2 1/2 "	4 3/8 "	1 3/4 "	3 5/16"	1"
864	S.B	6.05"	7.62"	5/8 "	4"	5"	2 3/8 "	3 3/4 "	1 1/4 "
984	S.B	7.00"	7.35"	5/8 "	4"	5"	2 1/2 "	3 3/4 "	1 3/8 "
886	O.S	7.00"	6.79"	3/4 "	4"	4 1/4 "	2 5/8 "	2 3/4 "	1 5/8 "
4671	S.B	9.00"	6.21"	1/2 "	3"	4 3/8 "	1 3/4 "	3 3/8 "	1"

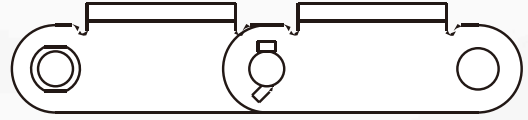
**CONTACT US**



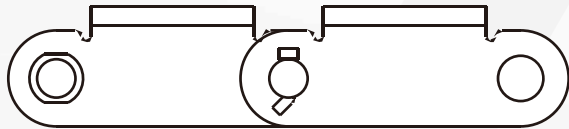
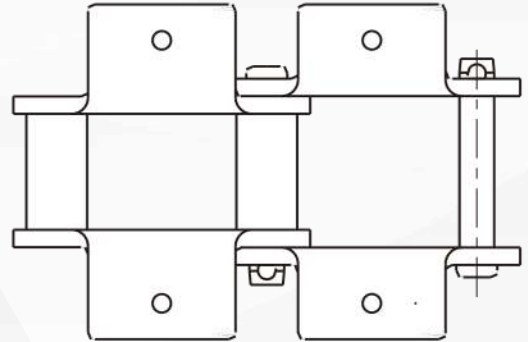
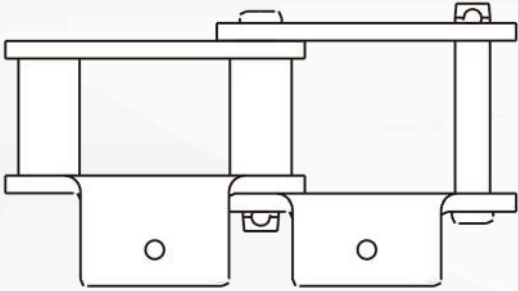
**STEEL BUSHED CHAIN WITH ATTACHMENTS**



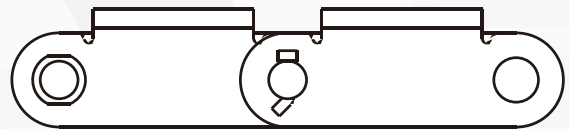
**A1**



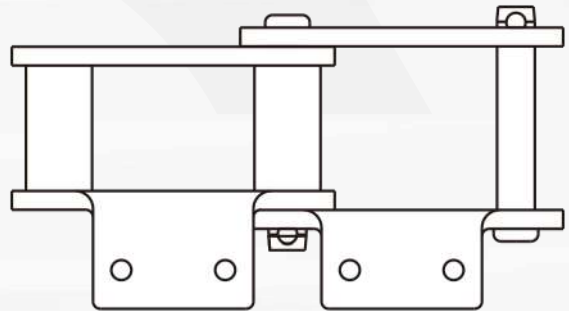
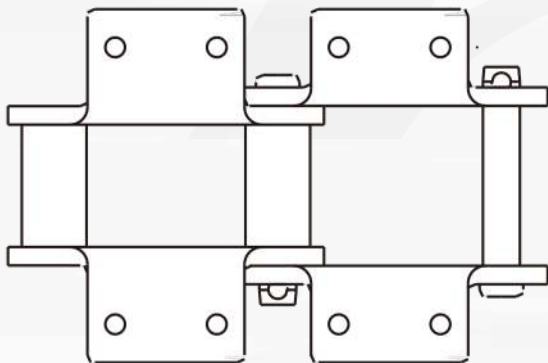
**K1**



**K2**



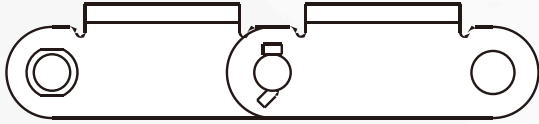
**A2**



**CONTACT US**



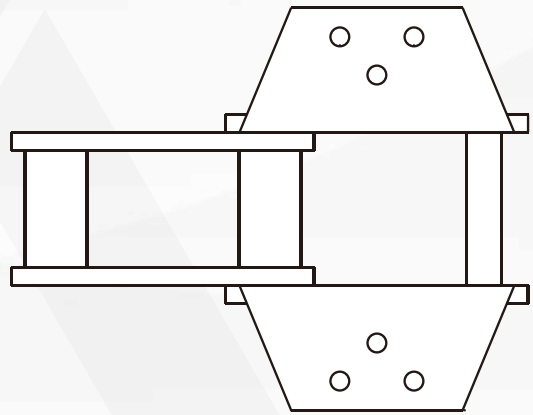
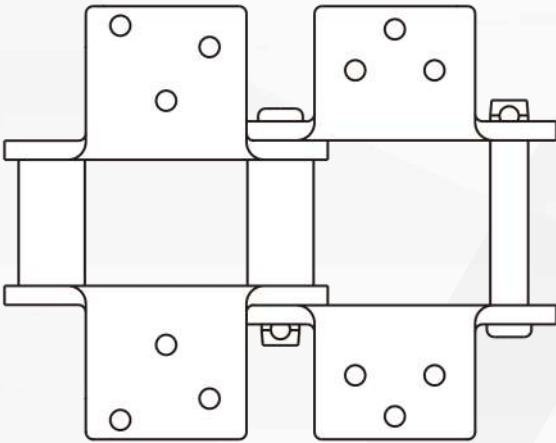
**STEEL BUSHED CHAIN WITH ATTACHMENTS**



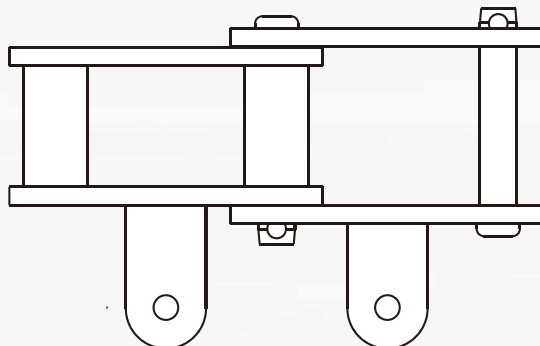
**K3**



**K35**



**A22**



**CONTACT US**



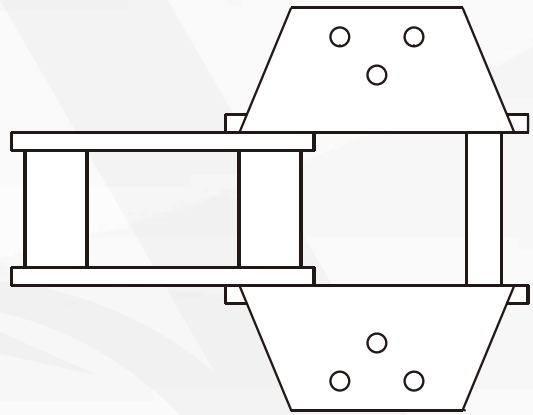
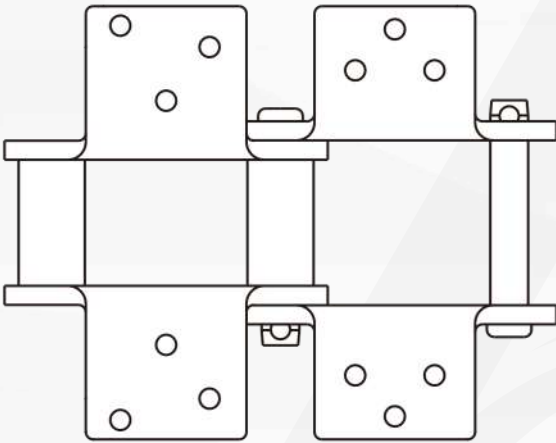
**STEEL BUSHED CHAIN WITHOUT ROLLERS**



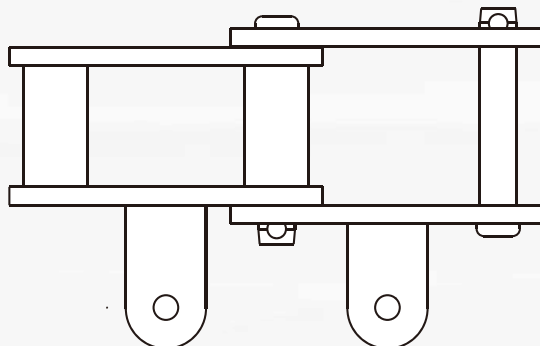
**K3**



**K35**



**A22**



**CONTACT US**



# STEEL BUSHED CHAIN WITH ROLLER



CONTACT US



## STEEL BUSHED CHAIN WITH ROLLER

**Agamus AI & Automation Ltd.** supplies a premium range of high-strength steel bushed chains with rollers as per **ASME B29.15M , DIN 8165 & DIN 8167** , ideal for demanding applications such as conveyors, elevators, and heavy-duty service environments. Our steel bushed roller chains are sourced to meet American Standards, offering superior strength and durability compared to other suppliers.

We offer two variations of steel bushed chains: straight bar (S.B) and offset style (O.S). Each variation is designed to meet specific application needs and ensure optimal performance.

### Key Features:

**High Strength:** Our steel bushed roller chains deliver reliable performance in challenging environments.

**Enhanced Durability:** Manufactured to meet American Standards, ensuring exceptional strength and longevity.

**Versatile Applications:** Suitable for use in bucket elevators, flight conveyors, and scraper conveyors.

**Two Variations:** Available in straight bar and offset styles to accommodate diverse application requirements.

**Standard Compliance:** All chains conform to American Standards for seamless integration with existing systems.

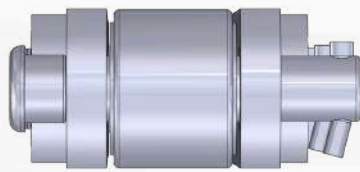
### Comprehensive Solutions:

In addition to steel bushed roller chains, **Agamus AI & Automation Ltd.** offers a full range of high-quality sprockets and other solutions, including wear components.

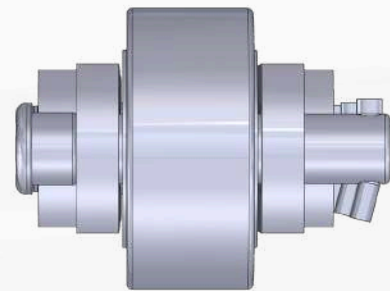
For more information or to discuss your specific requirements, please contact our customer service team at [sales@agamus.ca](mailto:sales@agamus.ca). We look forward to assisting you!



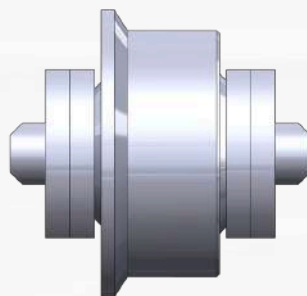
STYLE -A



STYLE -B



STYLE -C

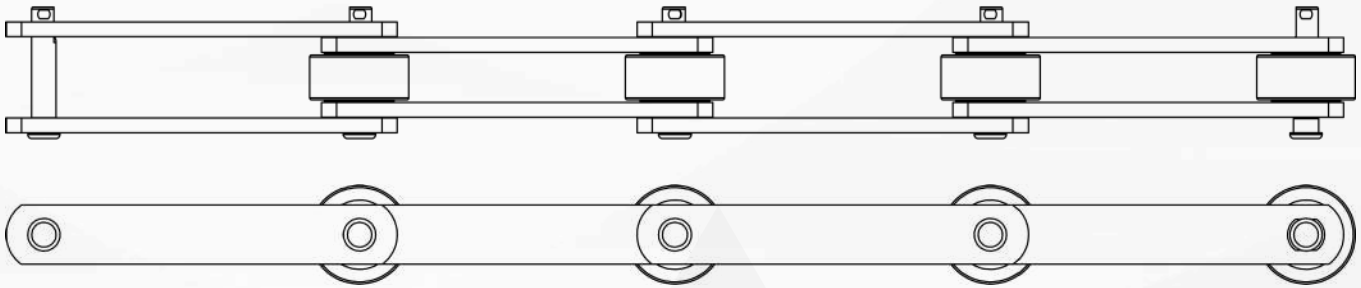


STYLE -D

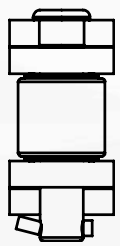
CONTACT US



**STEEL BUSHED CHAIN WITH ROLLER**



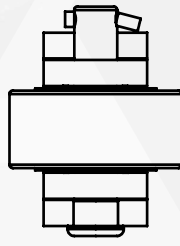
**STRAIGHT BAR TYPE**



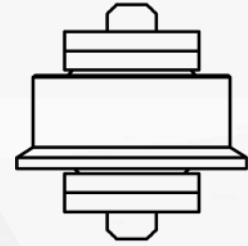
**STYLE -A**



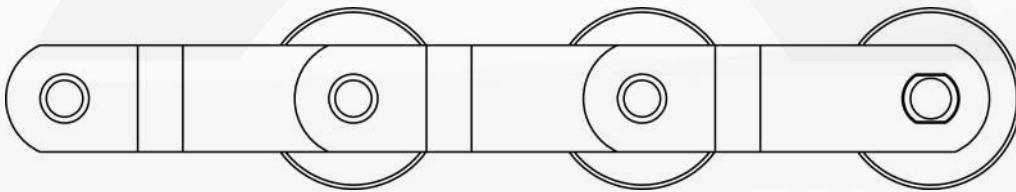
**STYLE -B**



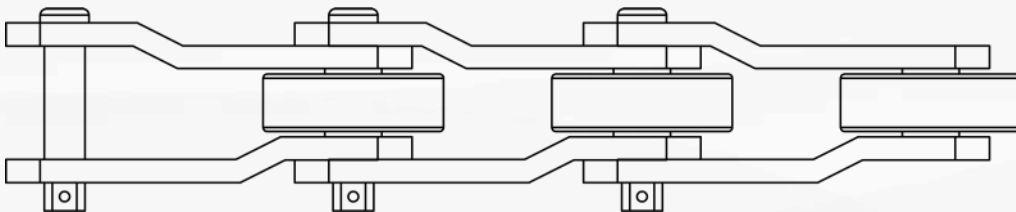
**STYLE -C**



**STYLE -D**



**OFFSET BAR TYPE**

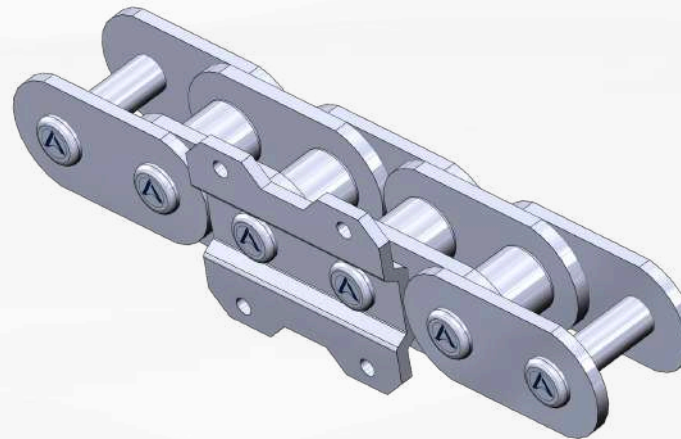
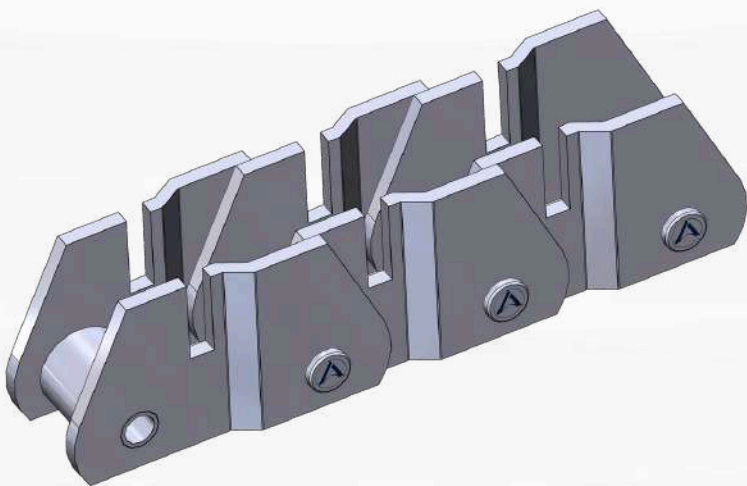
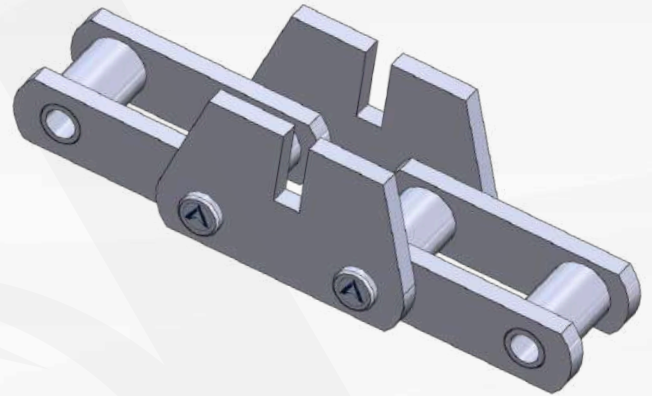
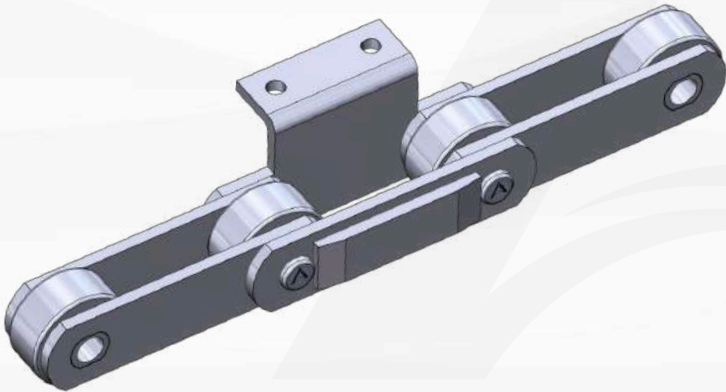
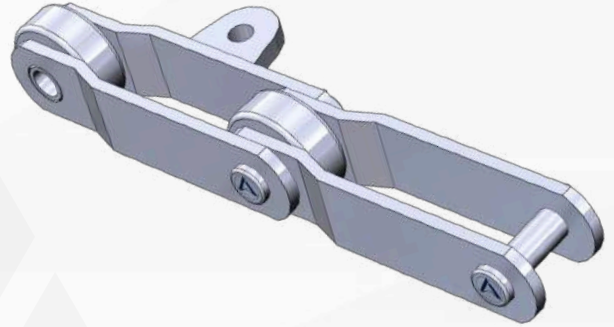
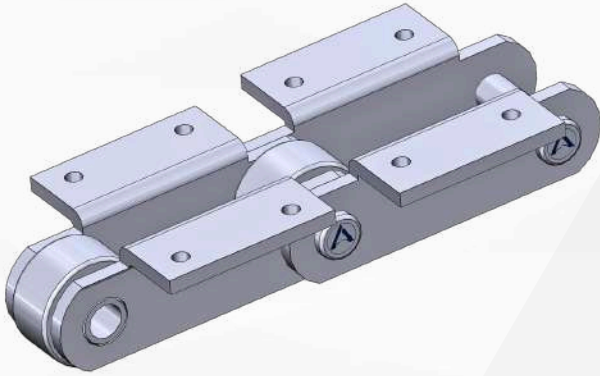


**CONTACT US**





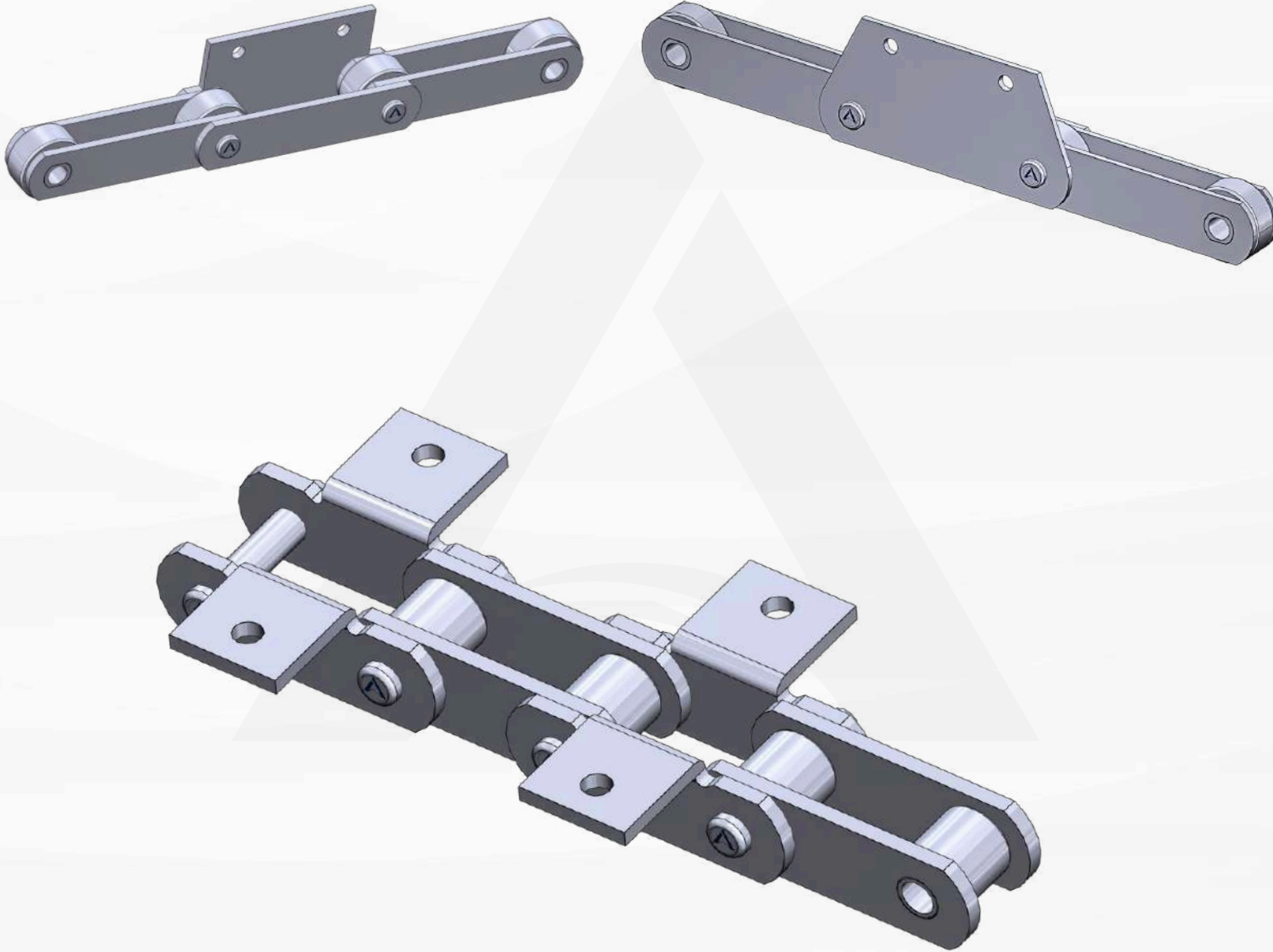
**STEEL BUSHED CHAIN WITH ROLLER**  
**CHAIN ATTACHMENTS**



**CONTACT US**



**STEEL BUSHED CHAIN WITH ROLLER**



Agamus AI and Automation offers a variety of attachments for steel bushed chains, with customized options available to meet your specific needs. For inquiries or more information, please contact us at [sales@agamus.ca](mailto:sales@agamus.ca) or visit our website at [www.agamus.ca](http://www.agamus.ca)

**CONTACT US**



## SHARP TOP CHAINS

Agamus AI & Automation Ltd. offers a premium selection of sharp top chains for reliable performance in various material handling applications. These chains ensure secure transport of products, making them ideal for environments that require efficiency and precision.

### Key Features:

**Enhanced Grip:** The sharp top design provides excellent traction, minimizing slippage during transport.

**High Strength:** Made from durable materials, our sharp top chains can handle heavy loads and tough conditions.

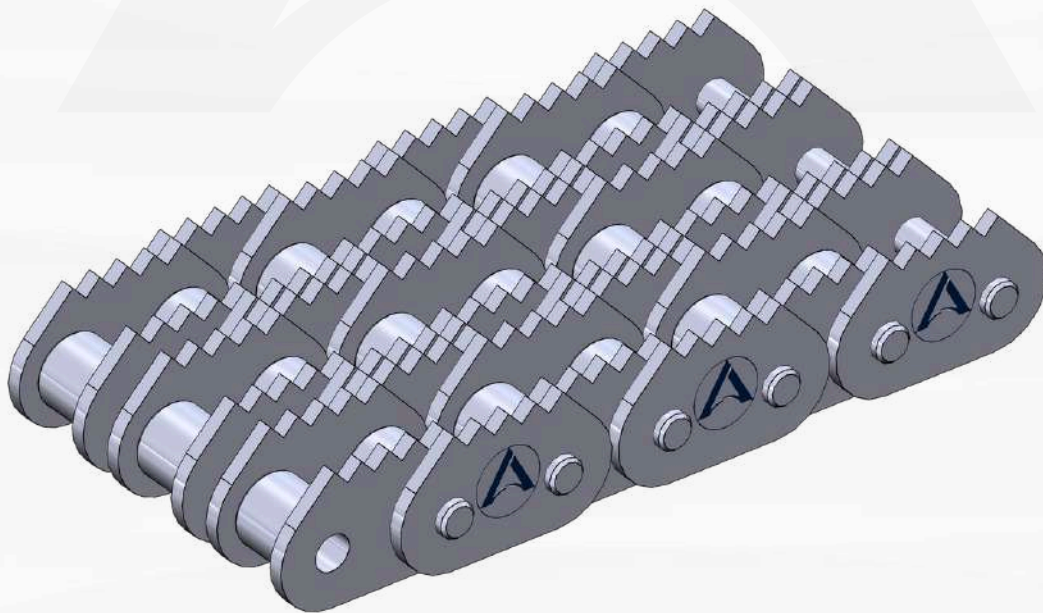
**Versatile Applications:** Suitable for packaging, bottling, and various manufacturing processes, sharp top chains adapt to many handling needs.

**Standard Compliance:** All chains meet industry standards, ensuring compatibility with your existing systems.

### Comprehensive Solutions:

In addition to sharp top chains, Agamus AI & Automation Ltd. offers a complete range of sprockets, wear components, and tailored solutions to enhance your material handling processes.

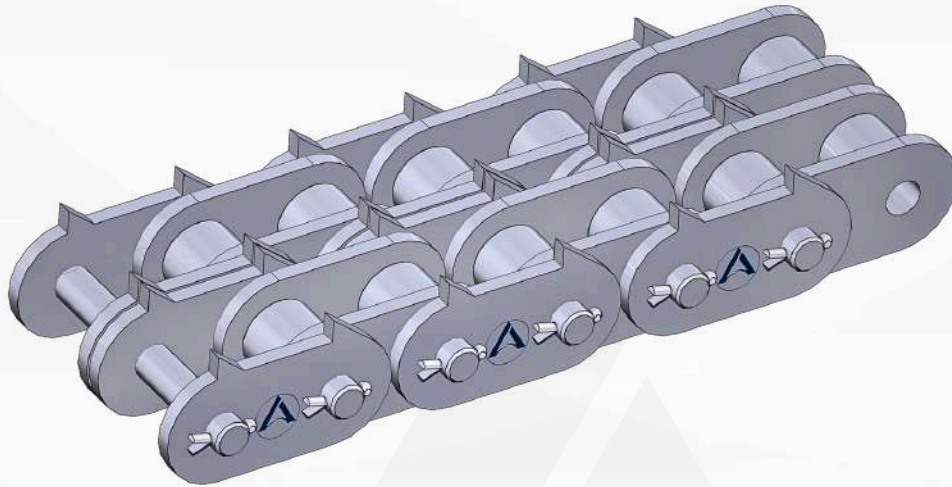
For more information or to discuss your specific needs, please contact our customer service team at [sales@agamus.ca](mailto:sales@agamus.ca). We look forward to supporting your operations!



**(4 POINT EVERY PITCH SHARP TOP CHAINS)**

CONTACT US





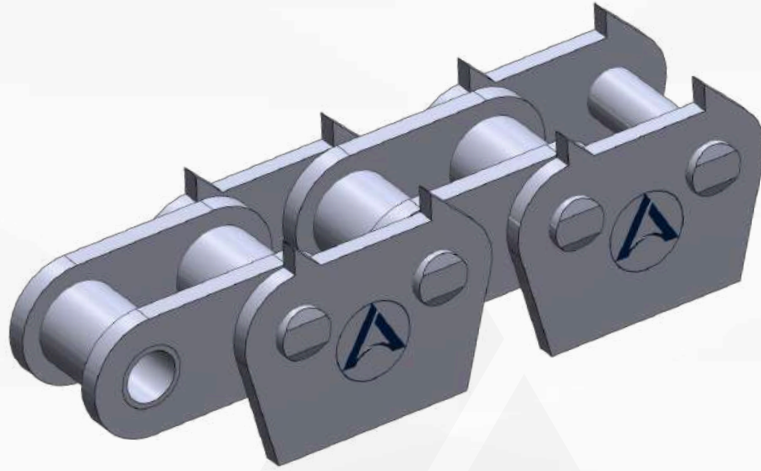
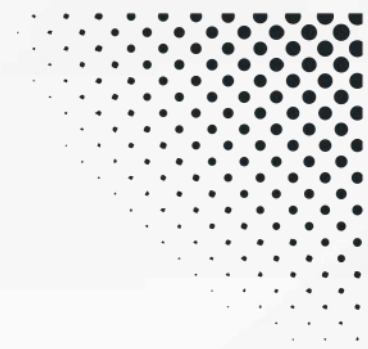
**2-POINT SLASHER LOW PROFILE (SLL)**



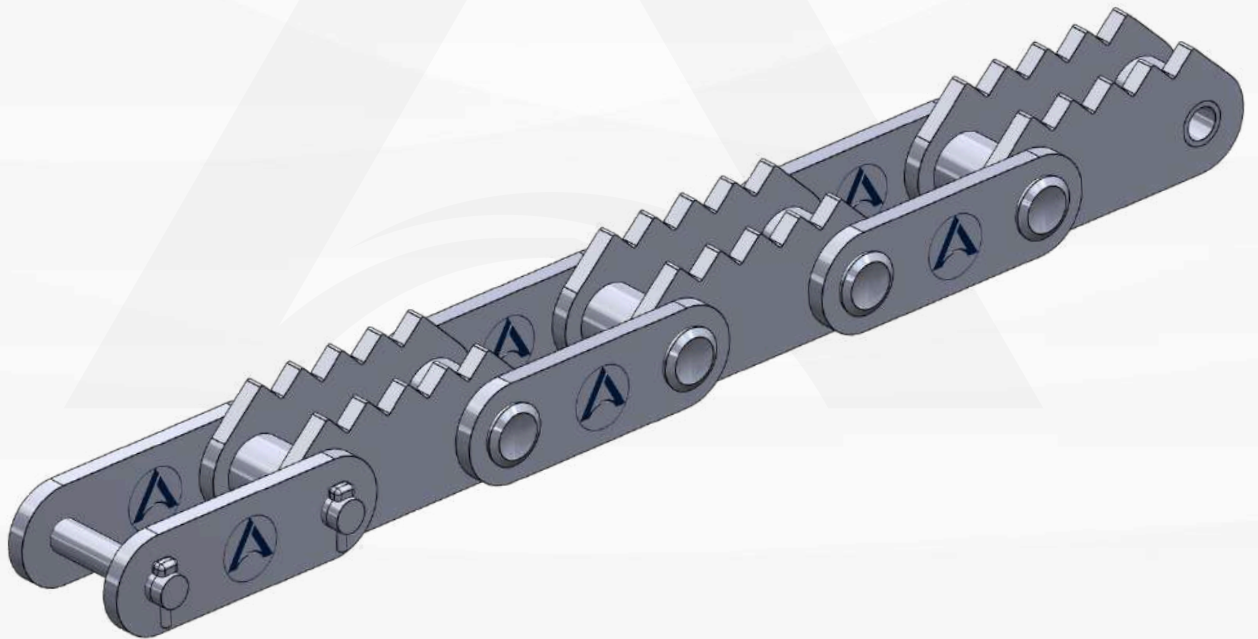
**1-POINT (SERIES) SHARP TOP CHAIN**

CONTACT US





**32B SHARP TOP CHAINS**



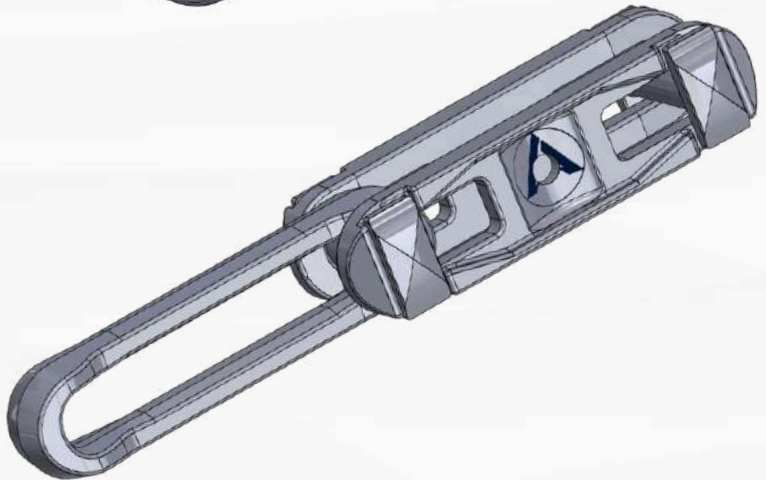
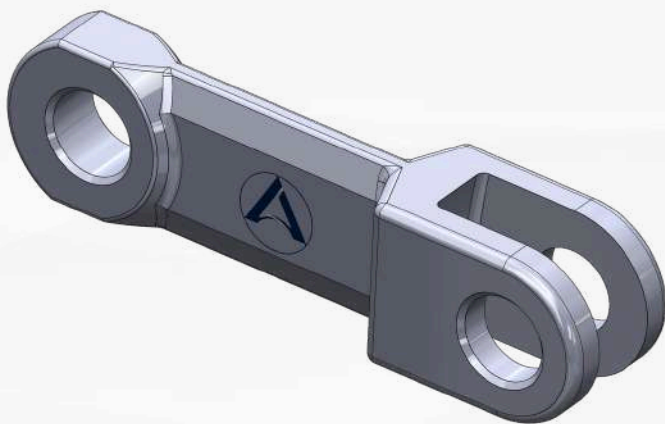
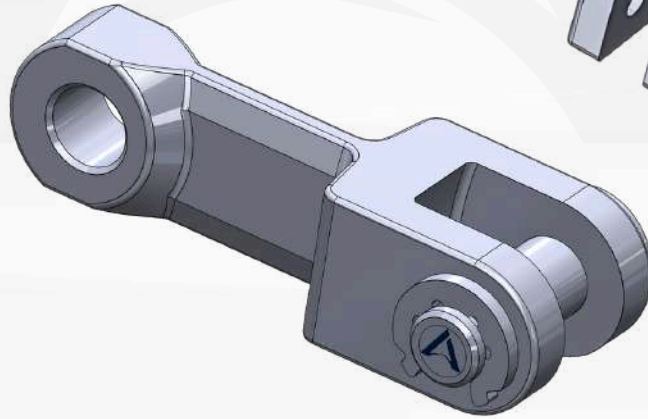
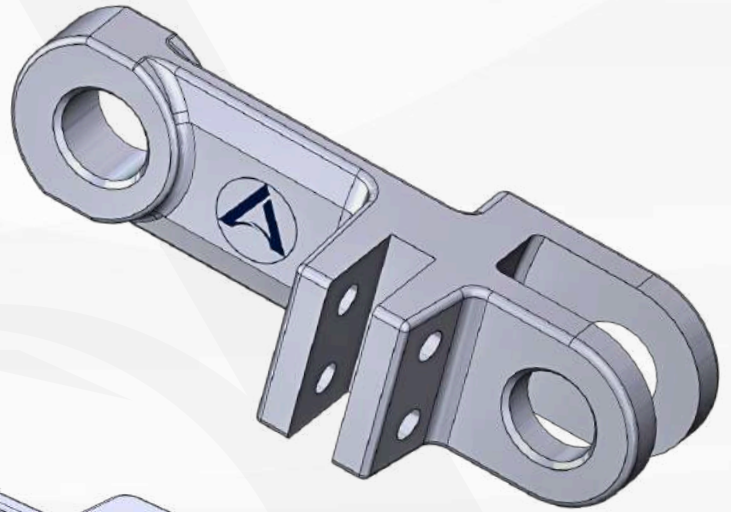
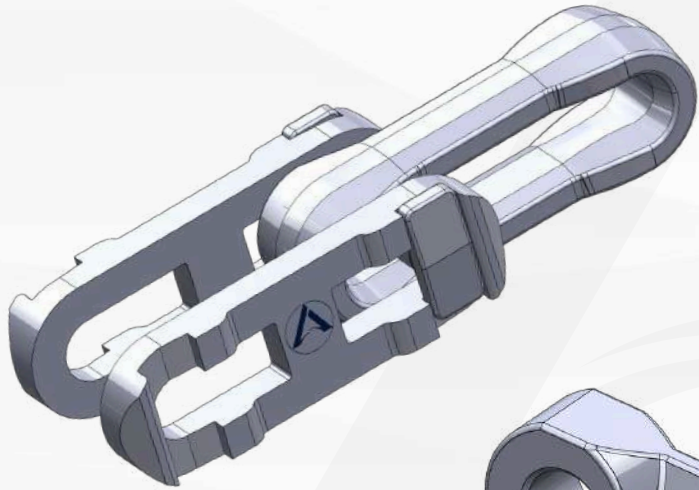
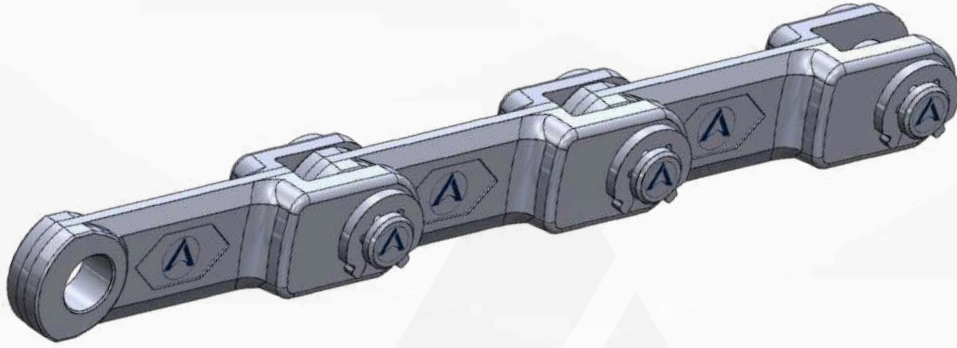
**(5 POINT EVERY PITCH SHARP TOP CHAIN)**

Agamus AI and Automation offers a variety of Sharp Top chains, with customized options available to meet your specific needs. For inquiries or more information, please contact us at [sales@agamus.ca](mailto:sales@agamus.ca) or visit our website at [www.agamus.ca](http://www.agamus.ca)

**CONTACT US**



# DROP FORGED & RIVETLESS CHAINS



CONTACT US



## DROP FORGED CHAINS

**Agamus AI & Automation Ltd.** offers a premium selection of Drop Forged Chains, renowned for their exceptional strength and durability, making them the ideal solution for heavy-duty material handling across diverse industries.

### Key Features:

- **Superior Strength:** Drop forged chains are designed to withstand heavy loads and harsh operating conditions.
- **Long-Lasting Durability:** Crafted to endure extreme wear, these chains ensure consistent performance and longevity.
- **Versatile Applications:** Ideal for use in conveyor systems, agricultural machinery, lifting operations, waste-to-energy systems, chemical plants, cement production, and more.
- **Customizable Options:** Available in a range of materials including carbon steel, alloy steel, and stainless steel for corrosion resistance.

### Types of Drop Forged Chain offered:

1. **Standard Drop Forged Chain:** Available in carbon steel or high-strength alloy steel, ideal for industrial and agricultural applications.
2. **X-Type Drop Forged Rivetless Chain:** Available in hardened alloy steel, perfect for both agricultural and industrial environments.
3. **Bar Loop Drop Forged Chain:** Tailored for specific uses like elevator bolts, offering reliable performance in niche applications.
4. **Drop Forged Conveyor Chain (Fork Link Chain):** Available for bulk material handling, including products such as grain, coal, and ash.

### Material Options Available:

- **TN (Manganese Chrome Alloy Steel):** Case-hardened with 20MnCr5 composition, offering high wear resistance and strength.
- **CN (Chrome Nickel Alloy Steel):** Case-hardened with 18NiCoMo5 composition for improved toughness and durability.
- **CD (Chrome Moly Alloy Steel):** Hardened and tempered with 42CrMo4 composition, ideal for high-stress applications.

### Comprehensive Solutions:

In addition to Drop Forged Chains, **Agamus AI & Automation Ltd.** offers a full range of complementary products, including chain attachments, sprockets, and customized solutions to enhance your material handling systems.

For more information or to discuss your specific needs, please contact our sales team at [sales@agamus.ca](mailto:sales@agamus.ca). We look forward to supporting your operations!

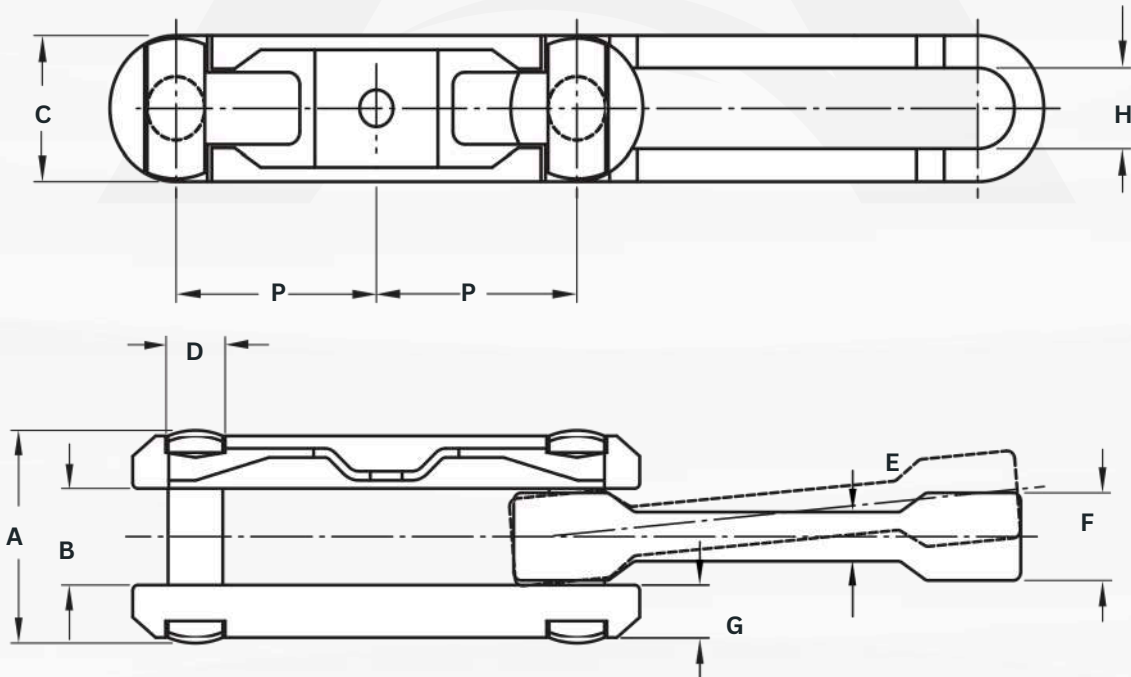
### CONTACT US



**STANDARD & X-TYPE DROP FORGED CHAIN**

CHAIN NO	P	d2	L	h2	H	t	T	b1
X228	2.00 "	0.25 "	1.09 "	0.31 "	0.71 "	0.25 "	0.37 "	0.51 "
X348	3.00 "	0.49 "	1.73 "	0.53 "	1.10 "	0.40 "	0.51 "	0.79 "
X458	4.00 "	0.63 "	2.25 "	0.66 "	1.44 "	0.48 "	0.64 "	1.07 "
X458XHD	4.00 "	0.63 "	2.25 "	0.66 "	1.44 "	0.48 "	0.64 "	1.07 "
468	4.03 "	0.75 "	3.31 "	0.88 "	1.88 "	0.41 "	1.13 "	1.69 "
X678	6.00 "	0.87 "	3.03 "	0.95 "	2.03 "	0.70 "	0.83 "	1.35 "
X678XHD	6.00 "	0.87 "	3.03 "	0.95 "	2.03 "	0.70 "	0.83 "	1.35 "
698	6.00 "	1.13 "	3.75 "	1.25 "	2.56 "	0.56 "	1.00 "	1.63 "
698XHD	6.00 "	1.13 "	3.75 "	1.25 "	2.56 "	0.56 "	1.00 "	1.63 "
998	9.03 "	1.13 "	3.75 "	1.25 "	2.66 "	0.56 "	1.00 "	1.69 "
9118	9.03 "	1.38 "	4.88 "	1.50 "	3.00 "	0.78 "	1.31 "	2.01 "

**X-TYPE DROP FORGED RIVETLESS CHAIN**



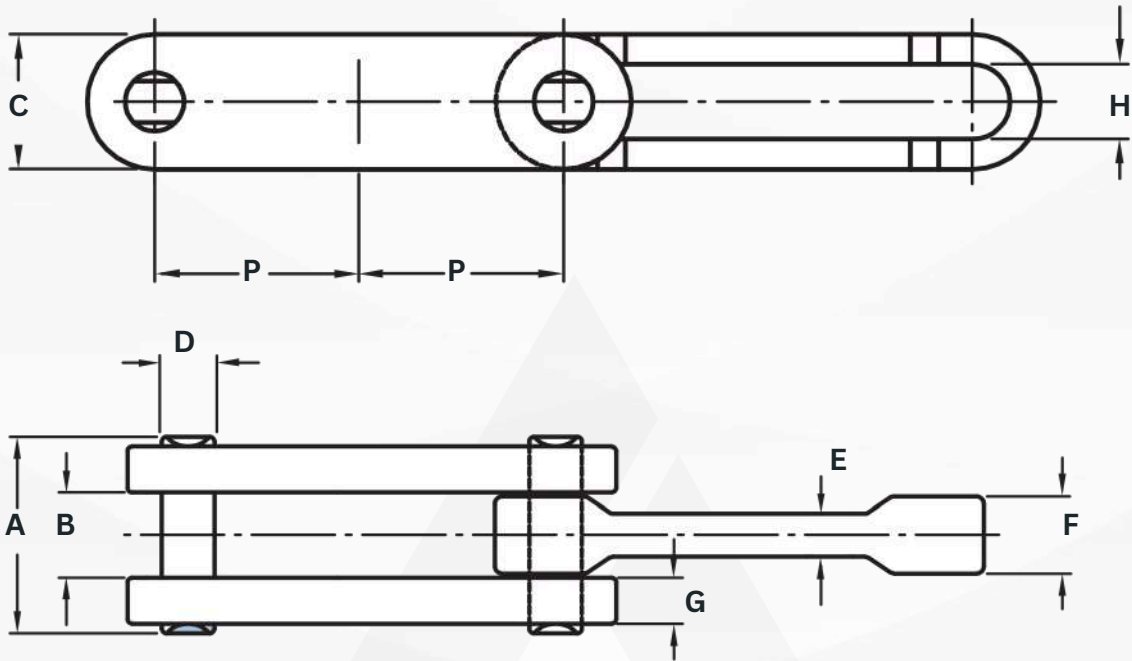
**CONTACT US**



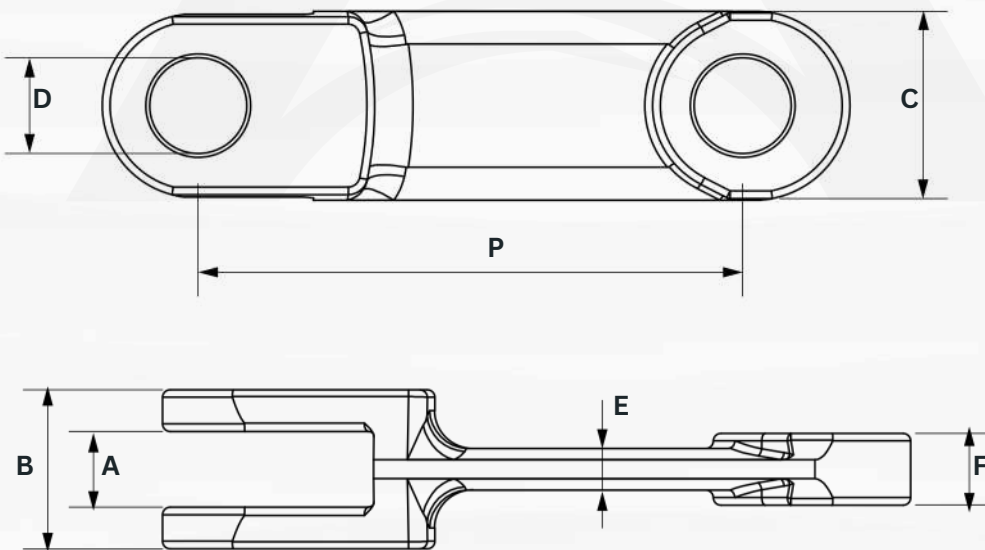




**BAR LOOP TYPE DROP FORGED RIVETLESS CHAIN**

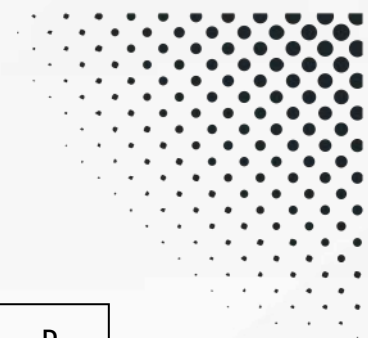


**STANDARD FORGED LINK**



**CONTACT US**





### STANDARD FORGED LINK

CHAIN NUMBER	P (mm)	P	B	C	F	A	E	D
10160	101.6	4.000"	0.945"	1.417"	0.354"	0.394"	0.236"	0.551"
10160R	101.6	4.000"	1.181"	1.417"	0.512"	0.551"	0.354"	0.551"
12514	125	4.921"	1.181"	1.417"	0.512"	0.551"	0.394"	0.630"
14214	142	5.591"	1.260"	1.614"	0.551"	0.591"	0.354"	0.709"
14218	142	5.591"	1.654"	1.969"	0.748"	0.787"	0.472"	0.984"
14222	142	5.591"	2.126"	1.969"	0.984"	1.063"	0.630"	0.984"
14226	142	5.591"	2.441"	1.969"	1.102"	1.181"	0.630"	0.984"
16018	160	6.299"	1.811"	1.811"	0.866"	0.945"	0.591"	0.866"
16025	160	6.299"	1.969"	2.087"	0.906"	0.984"	0.512"	0.984"
20025	200	7.874"	2.362"	1.969"	0.984"	1.063"	0.709"	0.984"
20028	200	7.874"	2.598"	2.362"	1.181"	1.260"	0.787"	1.181"
21640	216	8.504"	2.520"	2.835"	1.024"	1.102"	0.787"	1.378"
22040	220	8.661"	2.520"	2.835"	1.024"	1.102"	0.787"	1.378"
22050	220	8.661"	2.283"	2.953"	1.102"	1.181"	0.984"	1.260"
22060	220	8.661"	2.795"	2.953"	1.220"	1.299"	0.827"	1.378"
25040	250	9.843"	2.756"	2.953"	1.260"	1.339"	0.709"	1.260"
26035	260	10.236"	2.559"	2.953"	1.220"	1.299"	0.787"	1.260"
26040	260	10.236"	2.756"	2.953"	1.220"	1.299"	0.787"	1.260"
26045	260	10.236"	3.071"	2.953"	1.378"	1.457"	0.787"	1.260"

### FORGED CHAIN LINK (DOUBLE SERIES)

Chain No	P (mm)	P	B	C	F	Z	G	D
142182	142	5.591"	1.654"	1.969"	0.748"	2.756"	0.512"	0.984"
142262	142	5.591"	2.441"	1.969"	1.102"	3.425"	0.512"	0.984"
160252	160	6.299"	1.969"	2.087"	0.906"	3.228"	0.512"	0.984"
175402	175	6.890"	2.835"	2.362"	1.181"	3.740"	0.630"	1.181"
200252	200	7.874"	2.362"	1.969"	0.984"	3.189"	0.472"	0.984"
200402	200	7.874"	2.756"	2.362"	1.181"	3.740"	0.512"	1.181"
250252	250	9.843"	2.362"	1.969"	0.984"	3.189"	0.472"	0.984"
250402	250	9.843"	2.756"	2.362"	1.181"	3.740"	0.512"	1.181"
250602	250	9.843"	3.937"	2.756"	1.772"	5.512"	0.827"	1.378"

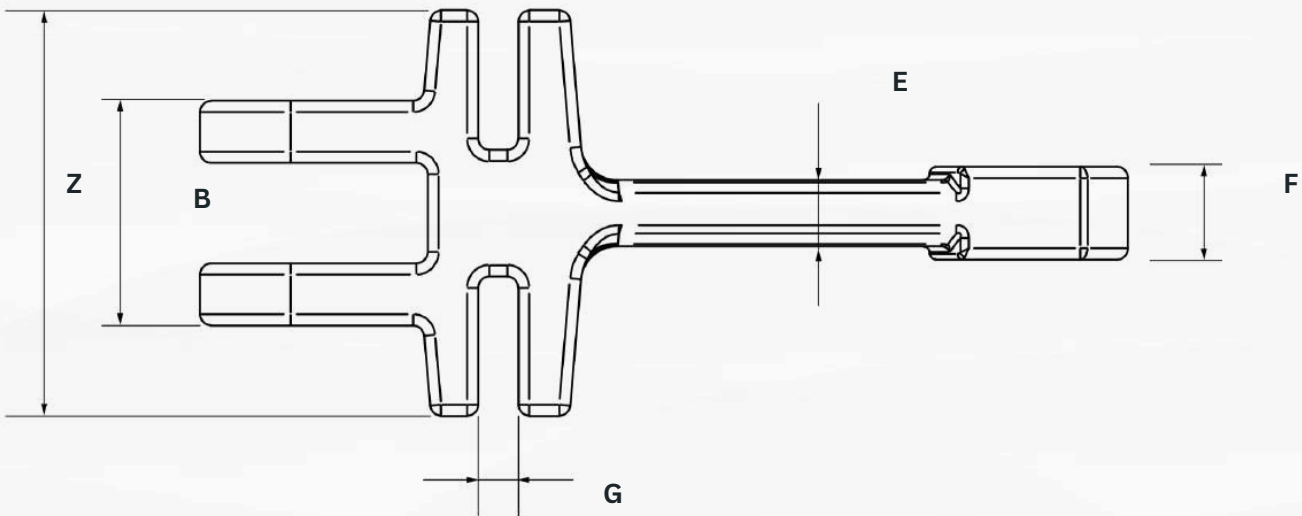
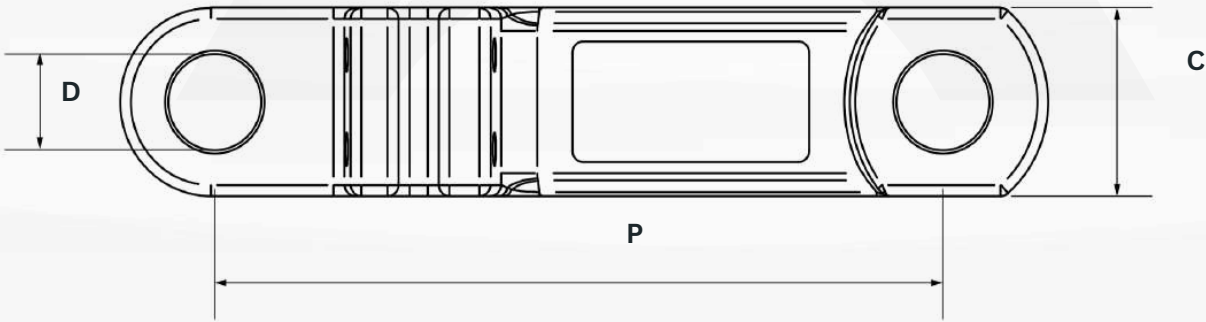
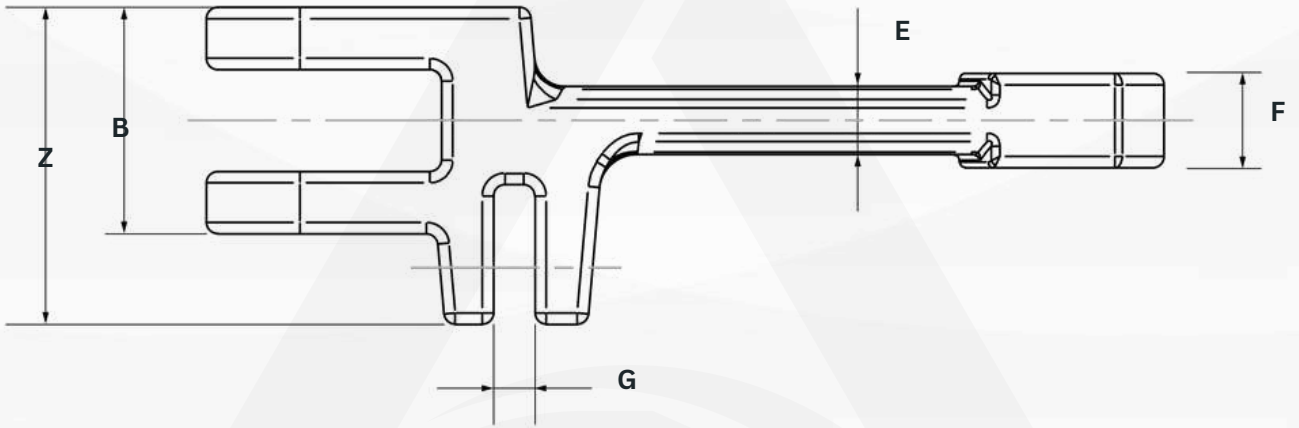
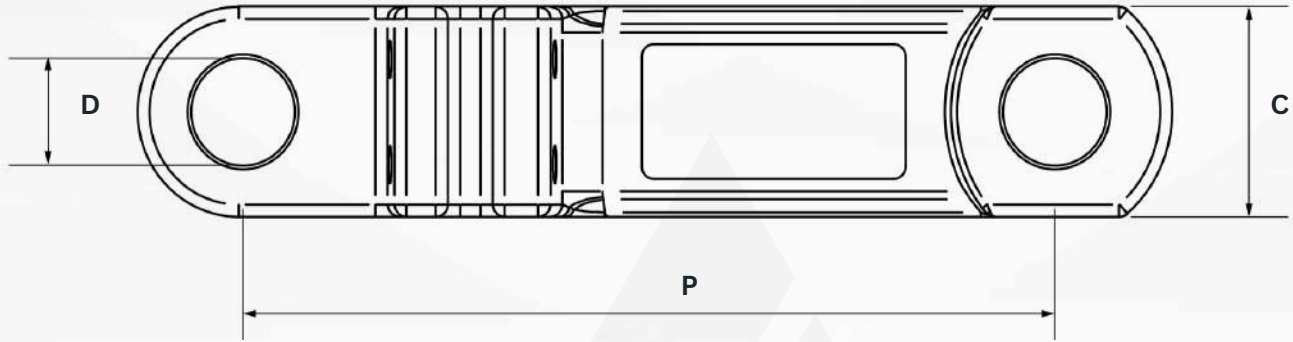
### FORGED CHAIN LINK (TRIPLE SERIES)

Chain No.	P(mm)	P	B	C	F	Z	G	D
142183	142	5.591"	1.654"	1.969"	0.748"	3.622"	0.512"	0.984"
142263	142	5.591"	2.441"	1.969"	1.102"	4.421"	0.512"	0.984"

### CONTACT US



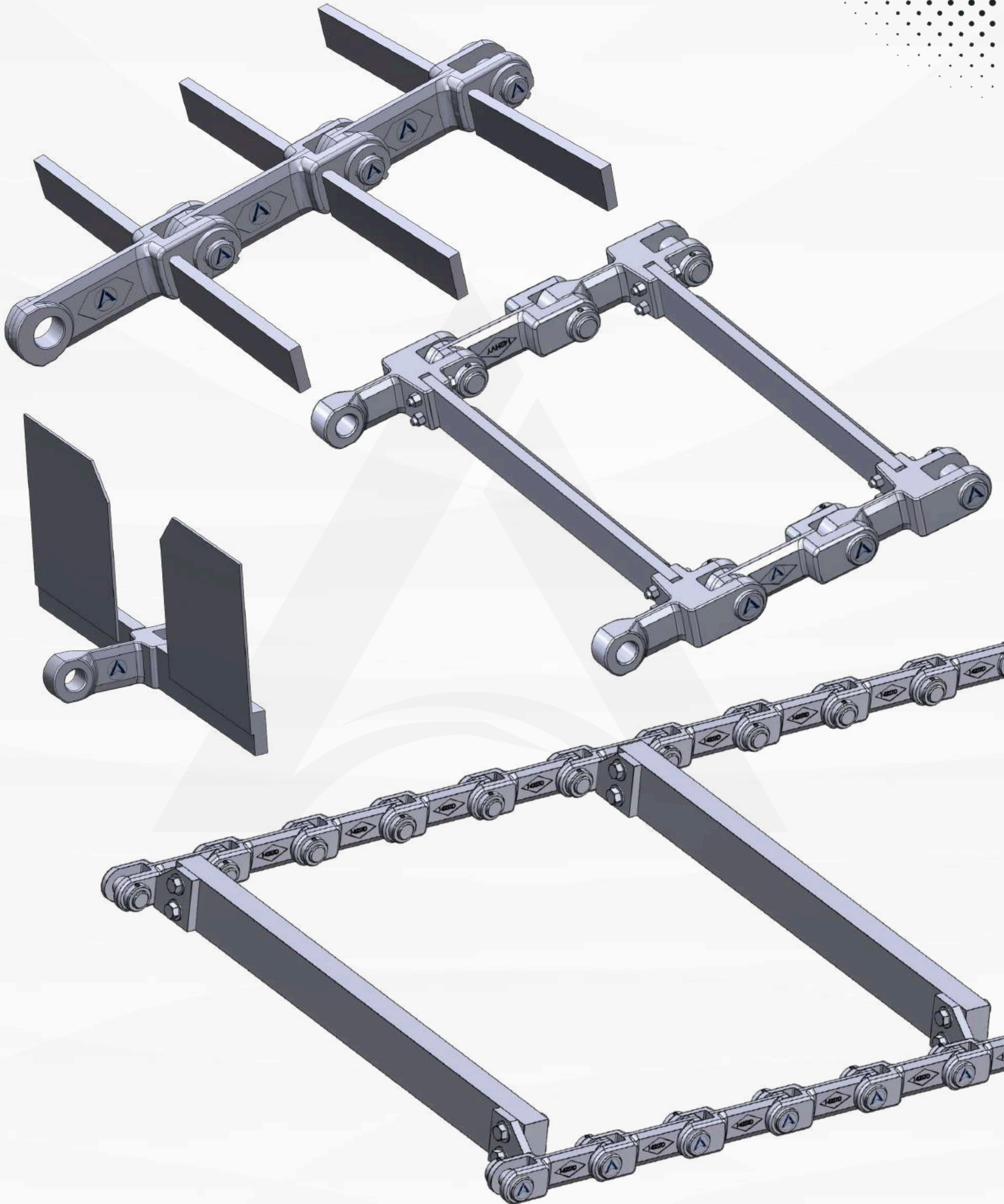
**FORGED CHAIN LINK (DOUBLE SERIES)**



**CONTACT US**



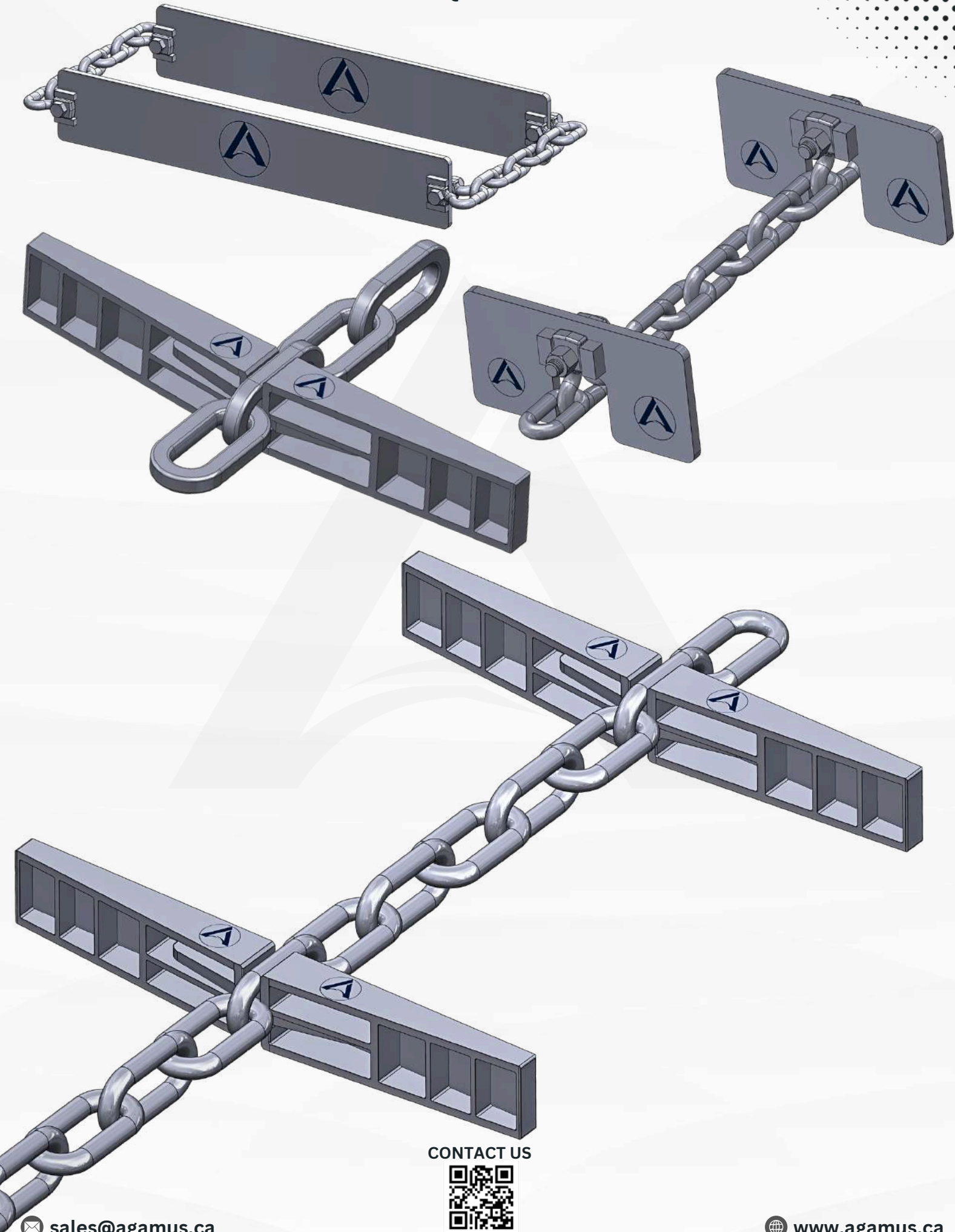
**FORGED CHAIN ATTACHMENTS**



**CONTACT US**

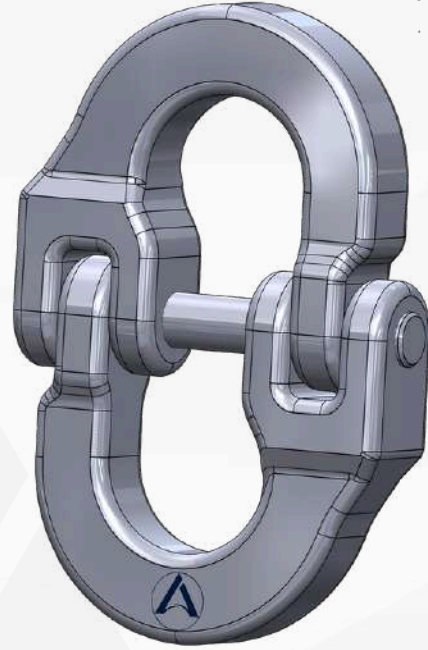
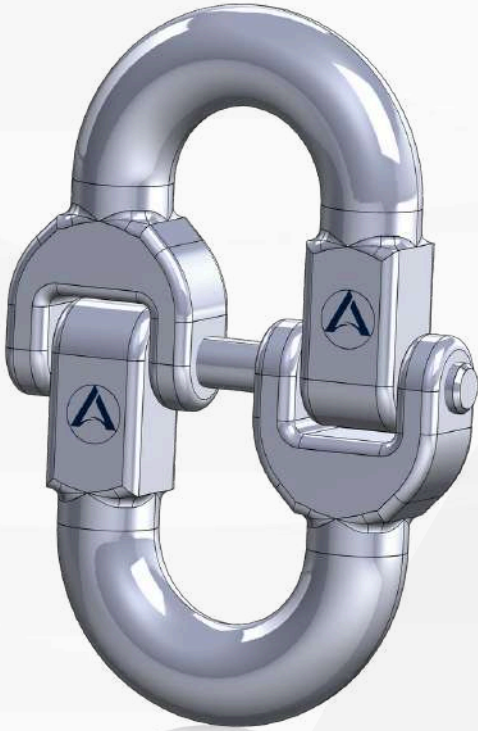


## ROUND AND SQUARE LINK CHAINS



CONTACT US





**SCAN TO  
GET YOUR QUOTE**



**AGAMUS AI & AUTOMATION**  
**404 - 1688,152 Street Surrey, V4A**  
**4NB, BC  Canada**

Agamus AI and Automation offers a variety of chains and attachments for various industries , with customized options available to meet your specific needs. For inquiries or more information, please contact us at [sales@agamus.ca](mailto:sales@agamus.ca) or visit our website at [www.agamus.ca](http://www.agamus.ca)

Disclaimer: hThe dimensions provided in this catalogue are for reference only. Actual dimensions may vary. Please consult with a representative for precise measurements.